

# EDCON-COMPONENTS



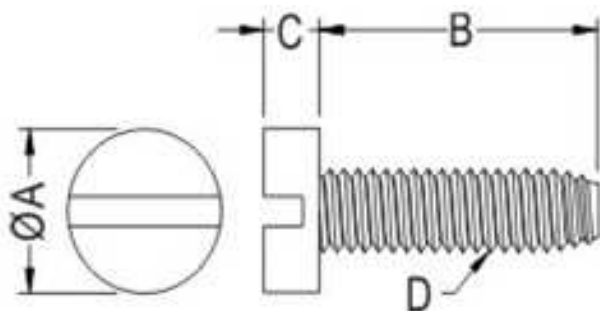
## Technical Informations

Material: Nylon 66 (UL)  
 Flame Class: 94V-2  
 Color: Natural  
 Temperature Range: -40°C ~ +85°C

## Ordering Code table

Order Code	D	B	A	C
A01	M3	4,0	5,5	2,0
A02	M3	5,0	5,5	2,0
A03	M3	6,0	5,5	2,0
A04	M3	8,0	5,5	2,0
A05	M3	10,0	5,5	2,0
A06	M3	12,0	5,5	2,0
A07	M3	16,0	5,5	2,0
A08	M3	20,0	5,5	2,0
A09	M3	25,0	5,5	2,0
A10	M3	30,0	5,5	2,0
A11	M3	42,0	5,5	2,0
A12				
A13				
A14				
A15				
A16				
A17				
A18				
A19				
A20				
A21				
A22				
A23				
A24				
A25				
A26				
A27				

## Dimension (mm)



**Metric Slotted Cheese  
Head Screw**

Part No.: **N14019**

DRW:	Jason	CHKD	Wilson	MATL:	Wilson	TOLERANCE	Mason	DATE	31.01.2013	Customer:
APPD:	Schumi			FINISH	Jamy		Sheet No.	1 from 1		

# EDCON-COMPONENTS



## Ordering Informations

Serie	Order Code	Material	Color	ROHS	Packing					
<b>N14019</b>	<b>A01</b>	<b>NY</b>	<b>WH</b>	<b>R</b>	<b>BU</b>					

<b>A01=</b> Length	<b>NY=</b> Nylon	<b>WH=</b> White	<b>R=</b> ROHS Conform	<b>BU=</b> Bulk-Ware					
			<b>N=</b> NON ROHS Conform	<b>IV=</b> Individual Packing					

<b>Metric Slotted Cheese Head Screw</b>	
Part No.:	<b>N14019</b>
Customer:	

DRW:	Jason	CHKD	Wilson	MATL:	Wilson	TOLERANCE	Mason	DATE	31.01.2013
APPD:	Schumi			FINISH	Jamy			Sheet No.	2 from 2