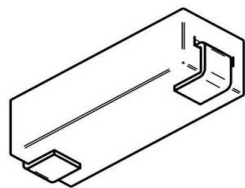


EDCON-COMPONENTS



Technical Discription

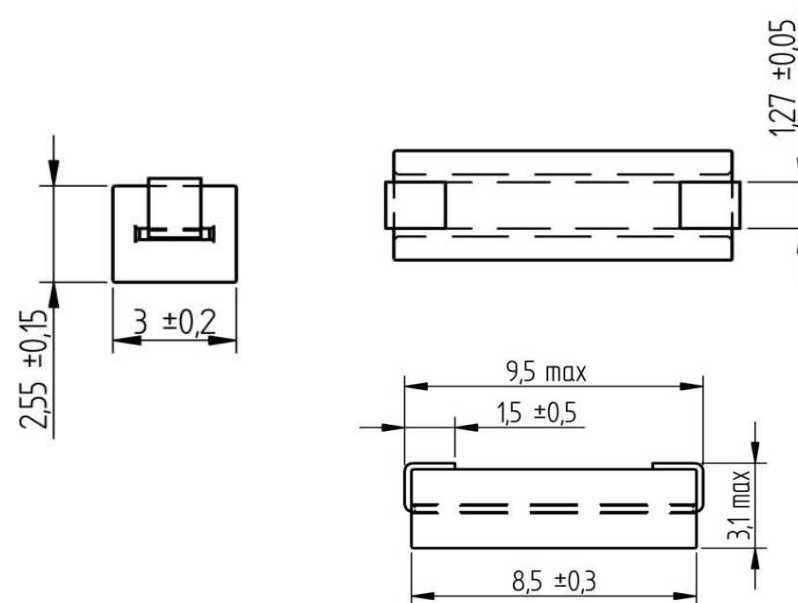
Drawing

Properties	Test Condition		Value	Unit	Tol.
Impedance @	25 Mhz	Z	58	Ω	typ.
Impedance @	100Mhz	Z	91	Ω	typ.
Rated current	$\Delta T = 40K$	I _r	6	A	max.
DC Resitance		RDC	0,9	m Ω	max.

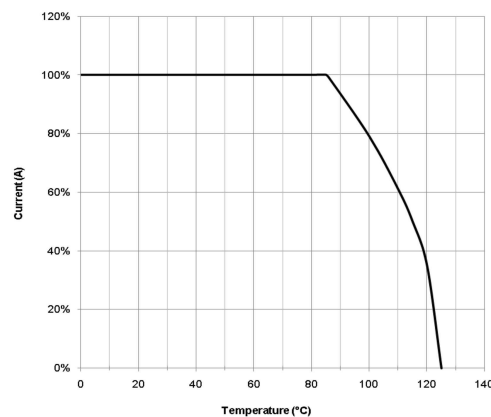
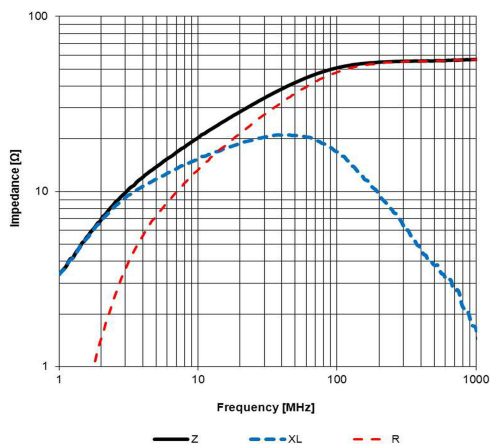
Operating Temperature Range: -40° to +125°C

Test conditions of technical description 20°C , 33 % RH

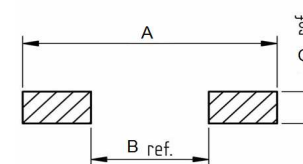
When used this parts higher than rated current the component are excessive heat and can damage the component.



Technical Parameter



Technical Dimension Solder Pads



A	10,8mm
B	5,0mm
C	14,7mm

SMD-HIGH Current Flat Ferrit Bead

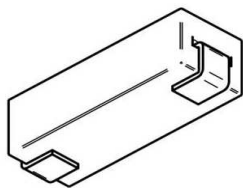
Part No.: **G14001**

DRW:	Jason	CHKD	Wilson	MATL:	Wilson	TOLERANCE	Mason	DATE	07.12.2012
APPD:	Schumi			FINISH	Jamy		Sheet No.	1 from 3	Customer:

www.edcon-components.com

email: info@edcon-components.com

EDCON-COMPONENTS



Ordering Informations

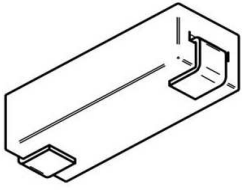
Serie	Range Code	Tolerance Code	Spezial Function	Spezial Function	ROHS	Packing				
-------	------------	----------------	------------------	------------------	------	---------	--	--	--	--

G14001	-	910	N	0	0	R	TR			
---------------	---	------------	----------	----------	----------	----------	-----------	--	--	--

910= 91 Ohm	N= ±25%	0= No function	0= No function	R= ROHS Conform	B101= Bulk-Ware 100PCS
					TR= Tape Reel

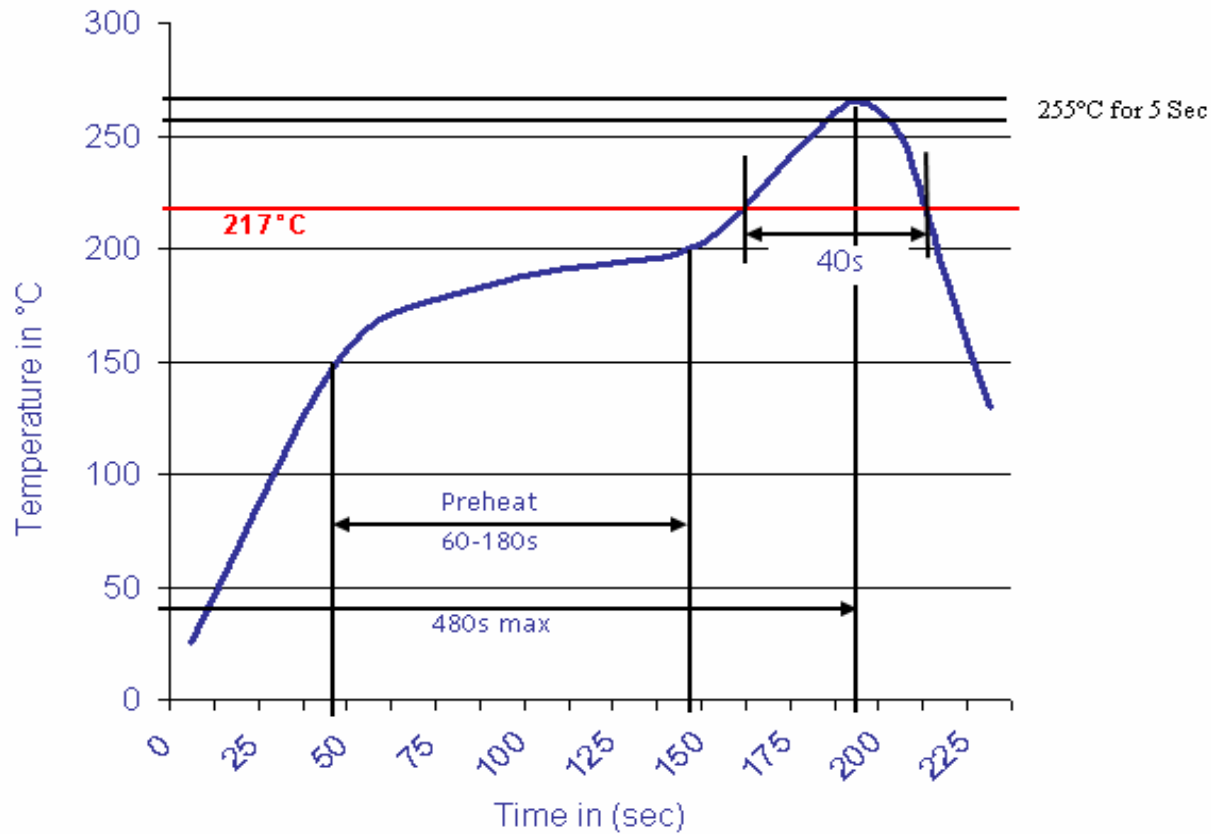
SMD-HIGH Current Flat Ferrit Bead
Part No.: G14001
Customer:

DRW:	Jason	CHKD	Wilson	MATL:	Wilson	TOLERANCE	Mason	DATE	07.12.2012
APPD:	Schumi			FINISH	Jamy		Sheet No.	2 from 3	



Soldering Profile Curve

Classification Reflow Profile (JEDEC J-STD-020C)



SMD-HIGH Current Flat Ferrit Bead	
Part No.:	G14001
Customer:	

DRW:	Jason	CHKD	Wilson	MATL:	Wilson	TOLERANCE	Mason	DATE	07.12.2012
APPD:	Schumi			FINISH	Jamy		Sheet No.		3 from 3