



Technical Specification

Features

Closed magnetic circuit structure allows high density mounting on a PCB board, mounting while preventing crosswalk.

Extremely high reliability due to entirely monolithic construction.

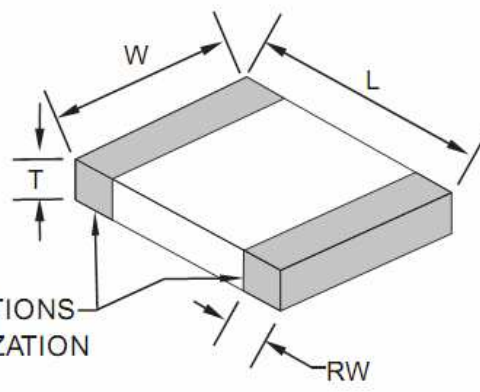
Low DC resistance structure of electronic to prevent wasteful electric power consumption.

High current application rating look at range.

Applications

for high speed signal lines

Dimensions



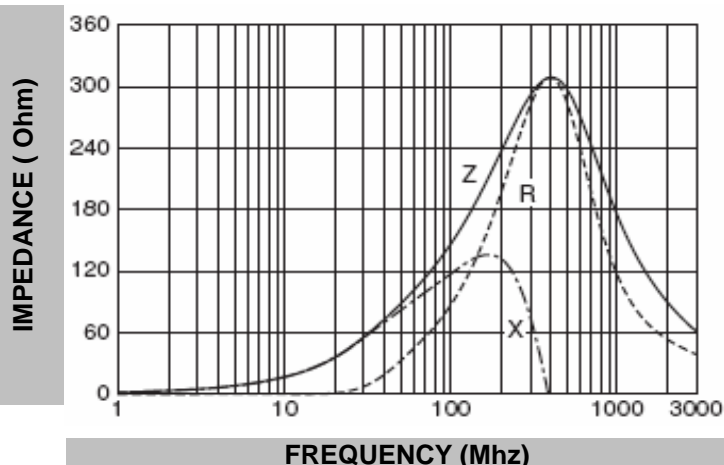
Chip Dimensions

L (mm)	W (mm)	T (mm)	RW (mm)
2,00 +/-0,2	1,25 +/-0,2	1,25 +/-0,2	0,5 +/-0,2

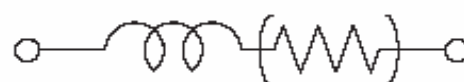
Test conditions

Specifications	Test Conditions		Value	Unit	Tol.
Impedance	100Mhz	Z	150	Ω	+/- 25%
Max. Impedance		Z		Ω	typ.
DC-Resistance		R _{DC}	0,250	Ω	max.
Rated Current		I _{bc}	200	mA	max.
Operating Temperature	-55°C to +125°C	°C			

Typical Impedance v.s. Frequency Curve:



Circuit



Ferrit Chip Bead Size 0805

Serie No.: **G12038**

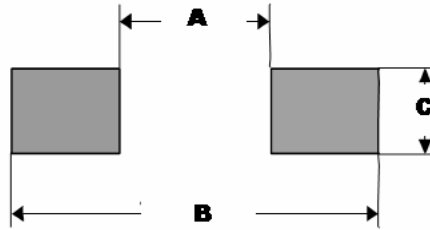
Customer:

DRW:	Johnny	CHKD	Carlo	MATL:	Wor	DATE	14.01.2013
APPD:	Elva			FINISH	Vienna	Sheet	1 from 2



P.C.B. Layout Dimension

	(mm)
A	1,10 ~ 1,30
B	3,0 ~ 4,0
C	1,00 ~ 1,65

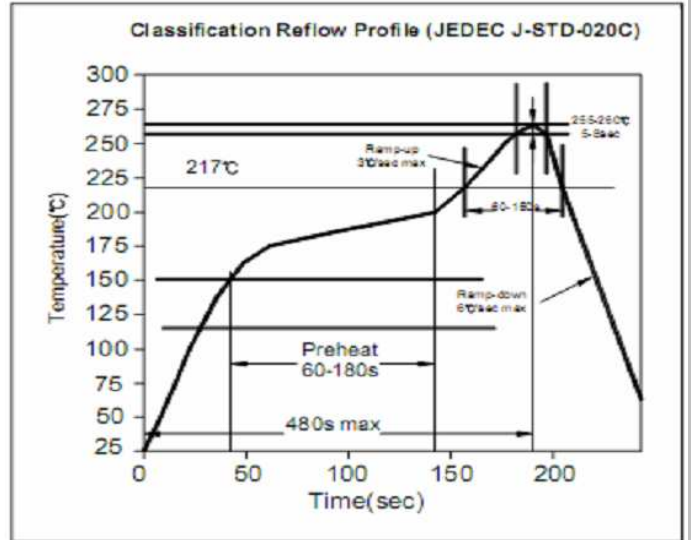


Soldering Profile

Soldering Profile for Lead Soldering



Soldering Profile for Lead Free Soldering



Ordering Information

Serie	Impedance	Tolerance	Current	Special	ROHS	Packing
G12038	151	N	201	X	R	TR
151= 150 Ohm		N= Tolerance 25%		201= 0,2A		X= No special function
				R= ROHS conform		BU= Bulk Ware TR= Tape/Reel
				N=NON ROHS conform		

Ferrit Chip Bead Size 0805

Serie No.: **G12038**

Customer:

DRW:	Johnny	CHKD	Carlo	MATL:	Wor	DATE	14.01.2013
APPD:	Elva			FINISH	Vienna	Sheet	2 from 2