



Technical Specification

Features

- Closed magnetic circuit structure allows high density mounting on a PCB board, mounting while preventing crosswalk.
- Extremely high reliability due to entirely monolithic construction.
- Low DC resistance structure of electronic to prevent wasteful electric power consumption.
- High current application rating look at range.

Dimensions



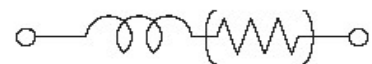
| Chip Dimensions | | Size Code | Size Dimension |
|-----------------|----------|-----------|----------------|
| | | 0805 | 2012 |
| L (mm) | W (mm) | T (mm) | RW (mm) |
| 2,0±0,3-01 | 1,25±0,2 | 0,85±0,2 | 0,5±0,3 |

Specifications / Test conditions

| | Min | Typ. | Max | Unit | Order Code |
|-------------------------------|------------------------|-----------------|-----|-----------|-------------|
| Impedance: (Z) | | 750 | | Ω | 750 |
| DC-Resistance: (RDC) | -- | 0,35 | -- | Ω | |
| Rated Current: (IDC) | -- | 500 | -- | mA | 501D |
| Operating Temperature: (°C) | -.55°C ~ +125°C | | | | |
| Tolerance: (%) | 25 | Tolerance Code: | | N | |
| Test-Conditions: (MHz) | 100 | Material Code: | | D | |

Typical Impedance v.s. Frequency Curve:

Circuit



IMPEDANCE (Ohm)

In the moment not available

FREQUENCY (Mhz)

General Signal Lines Chip Beads

Serie No.: **G12037-750-501D**

Customer:

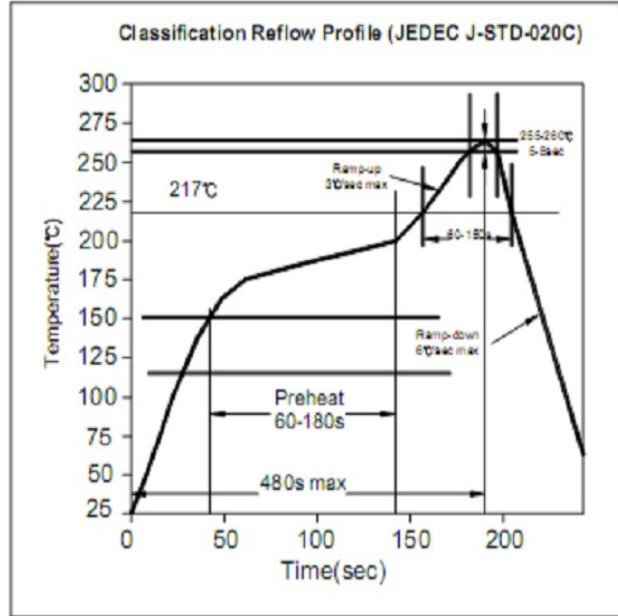
| | | | | | | | |
|-------|--------|------|-------|--|--------|-------|------------|
| DRW: | Johnny | CHKD | Carlo | | Wor | DATE | 19.02.2023 |
| APPD: | Elva | | | | Vienna | Sheet | 1 from 2 |

Copyright by EDCON S.Tiede



Soldering Profile for Lead Soldering

Soldering Profile for Lead Free Soldering



Ordering Information

| Serie | Tolerance | Special | ROHS | Packing |
|-------|-----------|---------|------|---------|
|-------|-----------|---------|------|---------|

| | | | | |
|-----------------|---|---|---|----|
| G12037-750-501D | N | X | R | TR |
|-----------------|---|---|---|----|

| | | | |
|-------------------------------|-------------------------------------|---------------------------------|-------------------------|
| N= Tolerance 25% | X= No special function | R= ROHS conform | BU= Bulk Ware |
| | | N=NON ROHS conform | |
| | | | TR= Tape/Reel |

**General Signal Lines
Chip Beads**

Serie No.: G12037-750-501D

Customer:

| | | | | | | |
|-------|--------|------|-------|--------|-------|------------|
| DRW: | Johnny | CHKD | Carlo | Wor | DATE | 19.02.2023 |
| APPD: | Elva | | | Vienna | Sheet | 2 from 2 |

Copyright by EDCON S.Tiede