

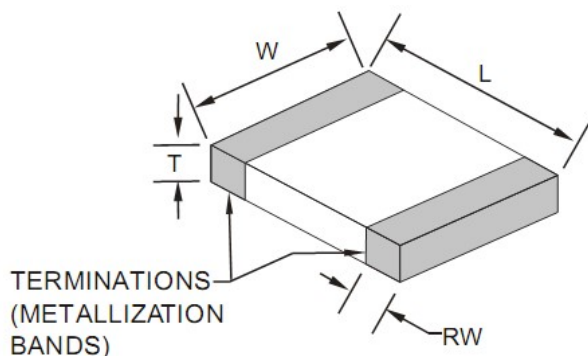


## Technical Specification

### Features

|   |
|---|
| Closed magnetic circuit structure allows high density mounting on a PCB board, mounting while preventing crosswalk. |
| Extremely high reliability due to entirely monolithic construction.   |
| Low DC resistance structure of electronic to prevent wasteful electric power consumption.                           |
| High current application rating look at range.  |

### Dimensions



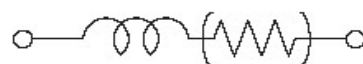
| Chip Dimensions |          | Size Code | Size Dimension |
|-----------------|----------|-----------|----------------|
|                 |          | 0603      | 1608           |
| L (mm)          | W (mm)   | T (mm)    | RW (mm)        |
| 1,6±0,15        | 0,8±0,15 | 0,8±0,15  | 0,3±0,2        |

## Specifications / Test conditions

|                               | Min            | Typ.            | Max | Unit | Order Code |
|-------------------------------|----------------|-----------------|-----|------|------------|
| Impedance: ( Z )              |                | 470             |     | Ω    | 471        |
| DC-Resistance: (RDC)          | --             | 0,55            | --  | Ω    |            |
| Rated Current: ( IDC )        | --             | 400             | --  | mA   | 401K       |
| Operating Temperature: ( °C ) | -55°C ~ +125°C |                 |     |      |            |
| Tolerance: ( % )              | 25             | Tolerance Code: |     | N    |            |
| Test-Conditions: ( MHz)       | 100            | Material Code:  |     | K    |            |

### Typical Impedance v.s. Frequency Curve:

### Circuit



IMPEDANCE ( Ohm )

In the moment not available

FREQUENCY (Mhz)

### High Speed Signal Lines Chip Beads

Serie No.: G12028-471-401K

Customer:

|       |        |      |       |  |        |       |            |
|-------|--------|------|-------|--|--------|-------|------------|
| DRW:  | Johnny | CHKD | Carlo |  | Wor    | DATE  | 19.02.2023 |
| APPD: | Elva   |      |       |  | Vienna | Sheet | 1 from 2   |

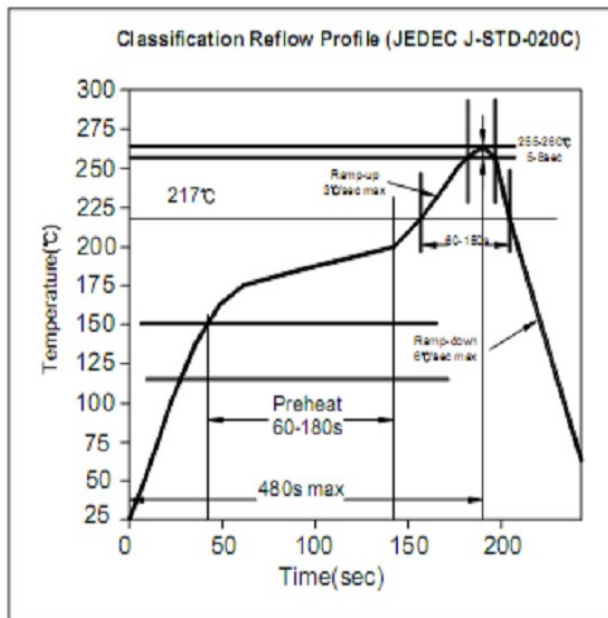
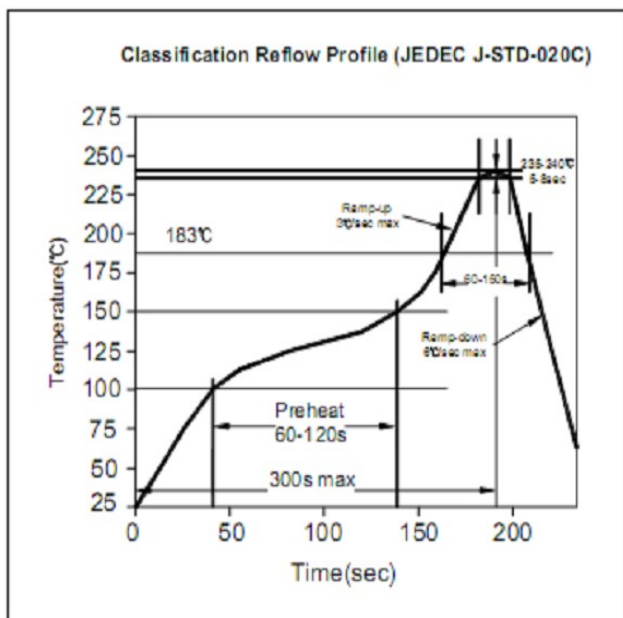
Copyright by EDCON S.Tiede

[www.edcon-components.com](http://www.edcon-components.com)



### Soldering Profile for Lead Soldering

### Soldering Profile for Lead Free Soldering



### Ordering Information

| Serie | Tolerance | Special | ROHS | Packing |
|-------|-----------|---------|------|---------|
|-------|-----------|---------|------|---------|

|                 |   |   |   |    |
|-----------------|---|---|---|----|
| G12028-471-401K | N | X | R | TR |
|-----------------|---|---|---|----|

|                  |                        |                    |               |
|------------------|------------------------|--------------------|---------------|
| N= Tolerance 25% | X= No special function | R= ROHS conform    | BU= Bulk Ware |
|                  |                        | N=NON ROHS conform | TR= Tape/Reel |

### High Speed Signal Lines Chip Beads

Serie No.: G12028-471-401K

Customer:

|       |        |      |       |  |        |       |            |
|-------|--------|------|-------|--|--------|-------|------------|
| DRW:  | Johnny | CHKD | Carlo |  | Wor    | DATE  | 19.02.2023 |
| APPD: | Elva   |      |       |  | Vienna | Sheet | 2 from 2   |

Copyright by EDCON S.Tiede

[www.edcon-components.com](http://www.edcon-components.com)