

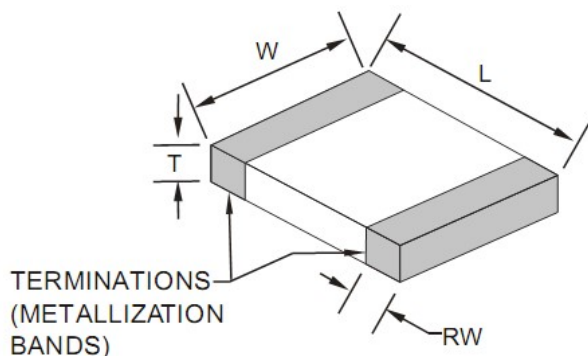


## Technical Specification

### Features

Closed magnetic circuit structure allows high density mounting on a PCB board, mounting while preventing crosswalk.
Extremely high reliability due to entirely monolithic construction.
Low DC resistance structure of electronic to prevent wasteful electric power consumption.
High current application rating look at range.

### Dimensions



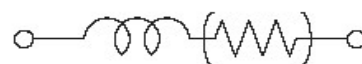
Chip Dimensions		Size Code	Size Dimension
		0603	1608
L (mm)	W (mm)	T (mm)	RW (mm)
1,6±0,15	0,8±0,15	0,8±0,15	0,3±0,2

## Specifications / Test conditions

	Min	Typ.	Max	Unit	Order Code
Impedance: ( Z )		1000		Ω	102
DC-Resistance: (RDC)	--	0,60	--	Ω	
Rated Current: ( IDC )	--	200	--	mA	201D
Operating Temperature: ( °C )	-55°C ~ +125°C				
Tolerance: ( % )	25	Tolerance Code:		N	
Test-Conditions: ( MHz)	100	Material Code:		D	

### Typical Impedance v.s. Frequency Curve:

### Circuit



IMPEDANCE ( Ohm )

In the moment not available

FREQUENCY (Mhz)

### Generell Signal Lines A Chip Beads

Serie No.: G12027-102-201D

Customer:

DRW:	Johnny	CHKD	Carlo		Wor	DATE	19.02.2023
APPD:	Elva				Vienna	Sheet	1 from 2

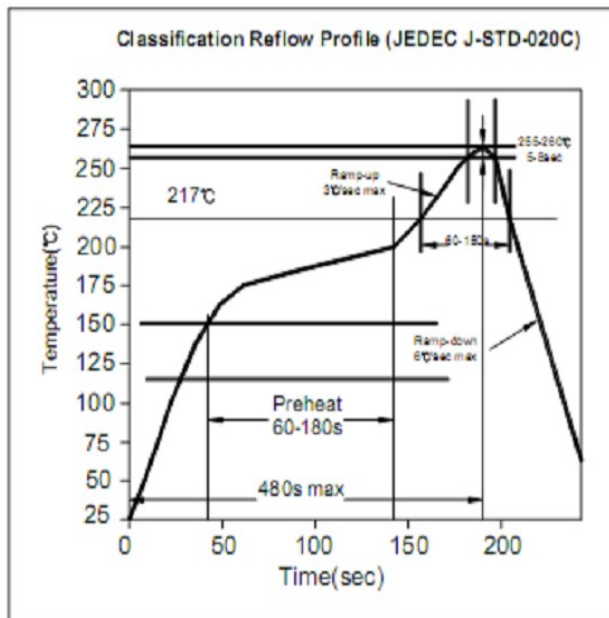
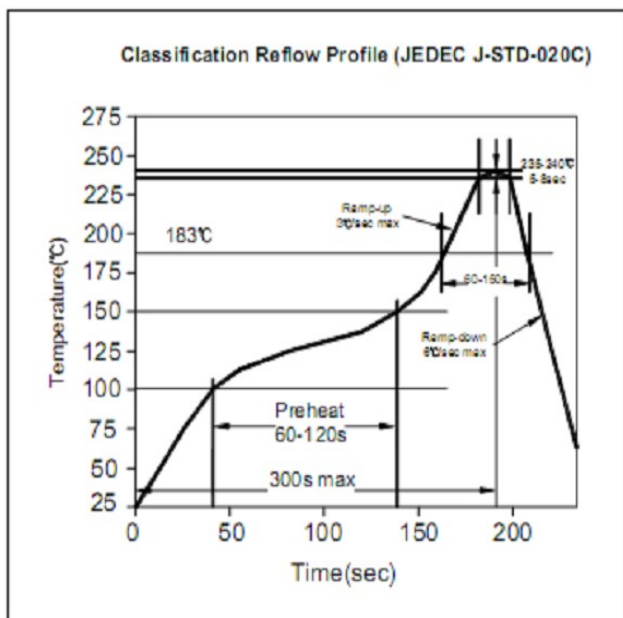
Copyright by EDCON S.Tiede

[www.edcon-components.com](http://www.edcon-components.com)



### Soldering Profile for Lead Soldering

### Soldering Profile for Lead Free Soldering



### Ordering Information

Serie	Tolerance	Special	ROHS	Packing
-------	-----------	---------	------	---------

G12027-102-201D	N	X	R	TR
-----------------	---	---	---	----

N= Tolerance 25%	X= No special function	R= ROHS conform	BU= Bulk Ware
		N=NON ROHS conform	TR= Tape/Reel

### Generell Signal Lines A Chip Beads

Serie No.: G12027-102-201D

Customer:

DRW:	Johnny	CHKD	Carlo		Wor	DATE	19.02.2023
APPD:	Elva				Vienna	Sheet	2 from 2

Copyright by EDCON S.Tiede

[www.edcon-components.com](http://www.edcon-components.com)