



Technical Specification

Features

Closed magnetic circuit structure allows high density mounting on a PCB board, mounting while preventing crosswalk.

Extremely high reliability due to entirely monolithic construction.

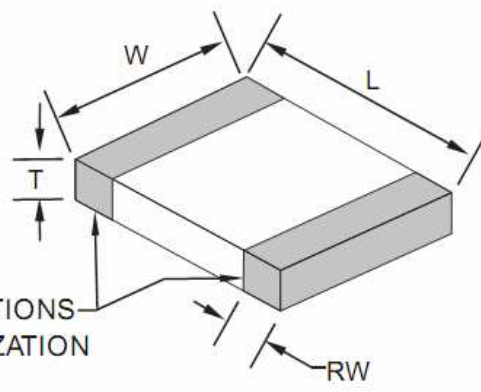
Low DC resistance structure of electronic to prevent wasteful electric power consumption.

High current application rating up to 6A look at size.

Applications

General Signal Lines

Dimensions



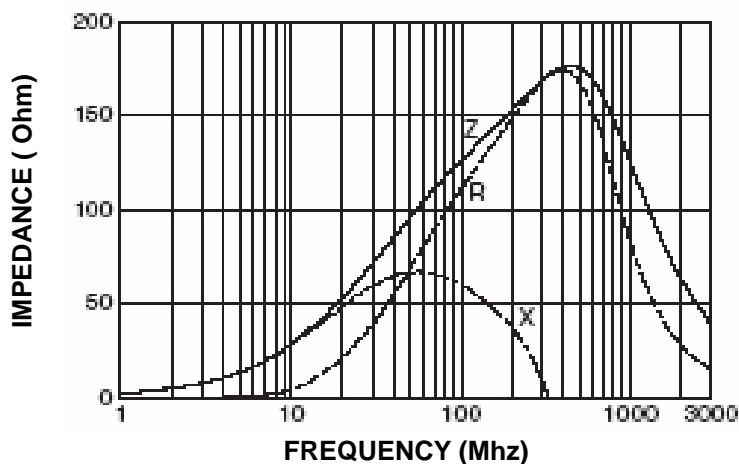
Chip Dimensions

L (mm)	W (mm)	T (mm)	RW (mm)
1,00 +/-0,05	0,5 +/-0,05	0,5 +/-0,05	0,25 +/-0,1

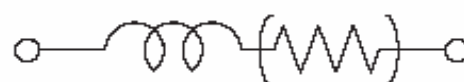
Test conditions

Specifications	Test Conditions		Value	Unit	Tol.
Impedance	100Mhz	Z	120	Ω	+/- 25%
Max. Impedance		Z		Ω	typ.
DC-Resistance		R _{DC}	0,250	Ω	max.
Rated Current		I _{bc}	500	mA	max.

Typical Impedance v.s. Frequency Curve:



Circuit



Ferrit Chip Bead Size 0402

Serie No.: **G12008**

Customer:

DRW:	Johnny	CHKD	Carlo	MATL:	Wor	DATE	12.01.2013
APPD:	Elva			FINISH	Vienna	Sheet	1 from 2



P.C.B. Layout Dimension

	(mm)
A	0,30 ~ 0,51
B	1,02 ~ 1,42
C	0,46 ~ 0,61

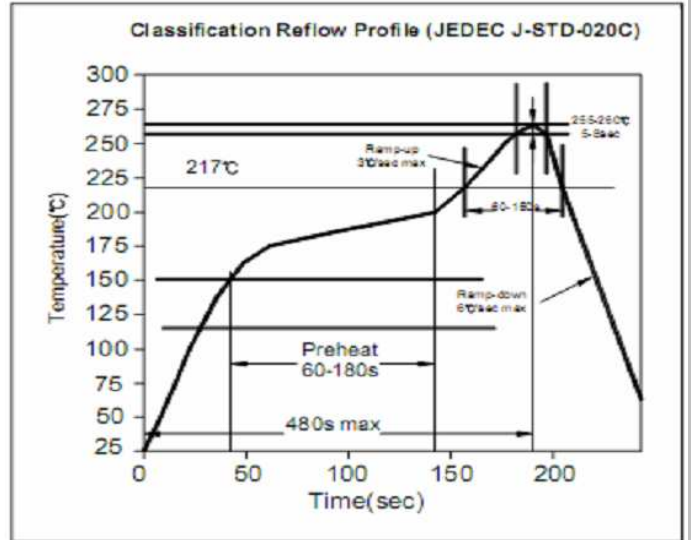


Soldering Profile

Soldering Profile for Lead Soldering



Soldering Profile for Lead Free Soldering



Ordering Information

Serie	Impedance	Tolerance	Current	ROHS	Packing
G12008	121	N	501	R	TR

121= 120 Ohm	N= Tolerance 25%	501= 0,5A	R= ROHS conform	BU= Bulk Ware TR= Tape/Reel
			N=NON ROHS conform	

Ferrit Chip Bead Size 0402

Serie No.: **G12008**

Customer:

DRW:	Johnny	CHKD	Carlo	MATL:	Wor	DATE	12.01.2013
APPD:	Elva			FINISH	Vienna	Sheet	2 from 2