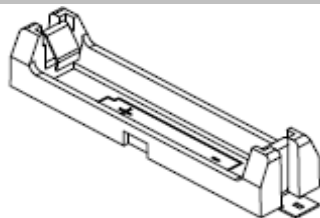


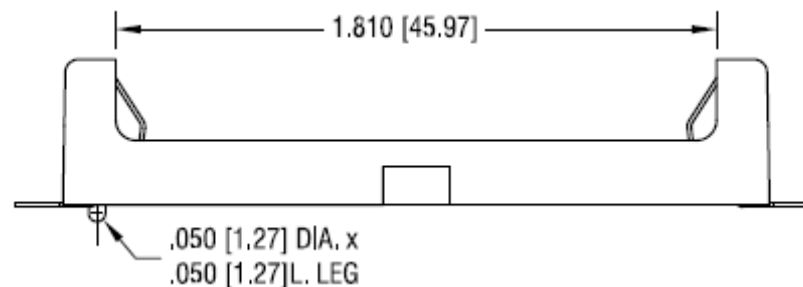
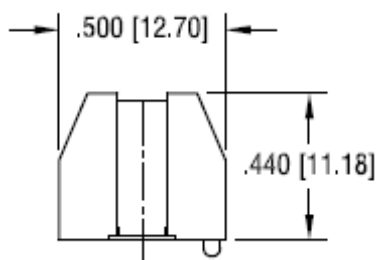
# EDCON-COMPONENTS



## Technical Specification

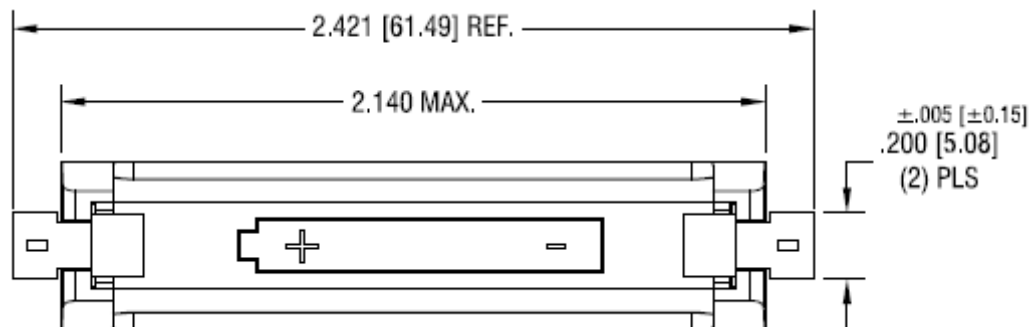
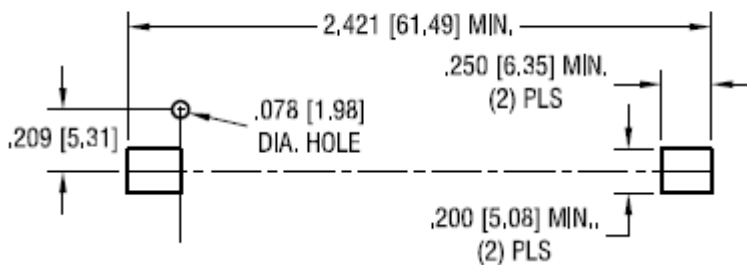
Body Material: Nylon 46 or Equivalent  
 Contact Material: Stainless Steel  
 Contact Plating: Gold Flash over Nickel

## Technical Drawing



## PCB Layout (inch / mm)

### MOUNTING PAD LAYOUT



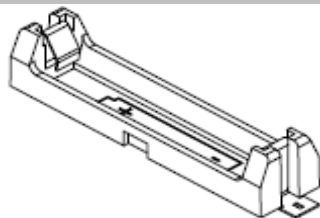
**SMD Batteriehalter AAA**

Part No.: **B29016**

DRW:	Jason	CHKD	Wilson	MATL:	Wilson	TOLERANCE	Mason	DATE	03.11.2018
APPD:	Schumi			FINISH	Jamy		Sheet No.		1 from 3

Customer:

# EDCON-COMPONENTS



## Ordering Informations

Serie	Contact Plating	Spezial Function	Spezial Function	Spezial Function	ROHS	Packing				
<b>B29016</b>	<b>G0</b>	<b>0</b>	<b>0</b>	<b>0</b>	<b>R</b>	<b>TR</b>				

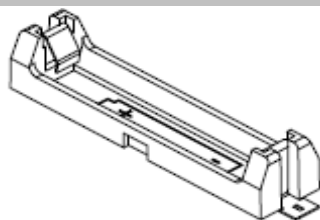
<b>G0=</b> Gold Flash	<b>0=</b> No function	<b>0=</b> No function	<b>0=</b> No function	<b>R=</b> ROHS Conform	<b>B101=</b> Bulk-Ware 100PCS
					<b>TR=</b> Tape Reel

**SMD Batteriehalter AAA**

Part No.: **B29016**

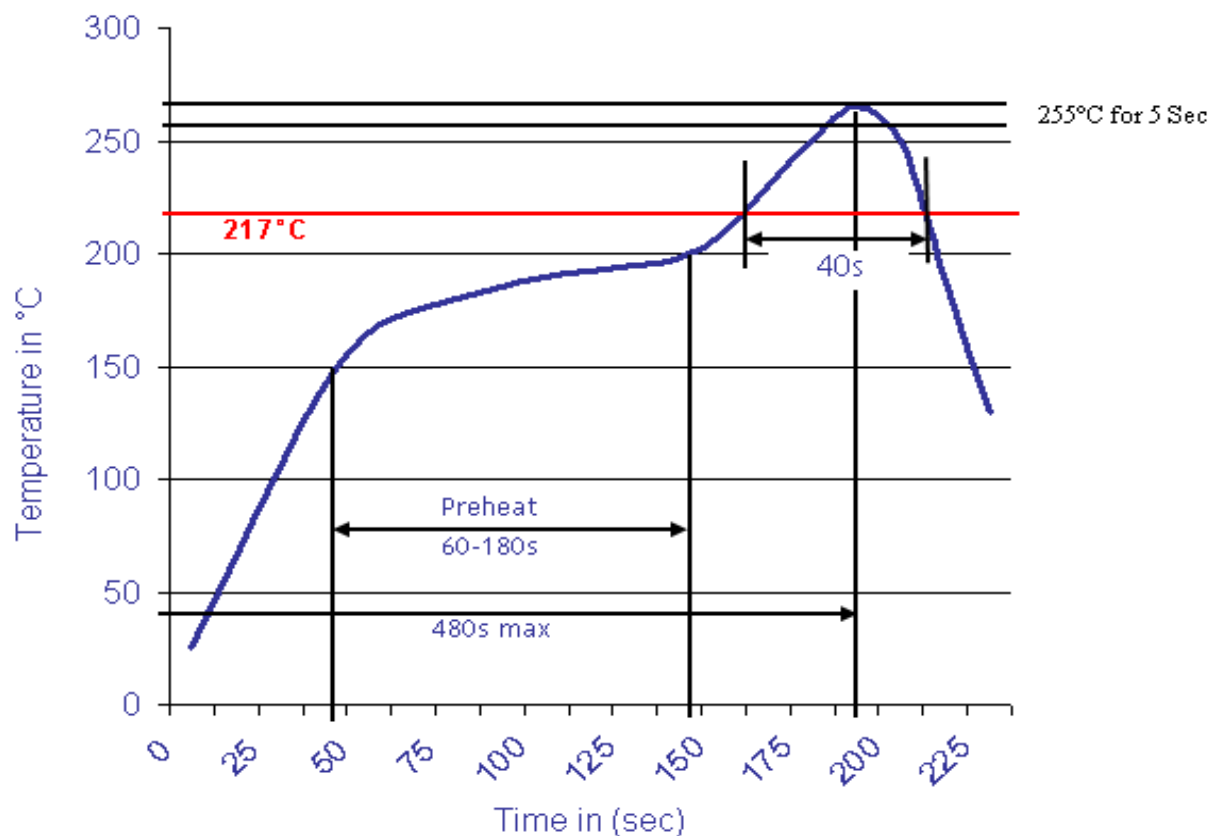
DRW:	Jason	CHKD	Wilson	MATL:	Wilson	TOLERANCE	Mason	DATE	03.11.2018
APPD:	Schumi			FINISH	Jamy		Sheet No.		2 from 3

Customer:



Soldering Profile Curve

Classification Reflow Profile (JEDEC J-STD-020C)



SMD Batteriehalter AAA

Part No.: **B29016**

Customer:

DRW:	Jason	CHKD	Wilson	MATL:	Wilson	TOLERANCE	Mason	DATE	03.11.2018
APPD:	Schumi			FINISH	Jamy		Sheet No.		3 from 3