



Technical Specification

Insulator Material:	PBT UL94V-0
Contact Resistance:	30m Ohm max.
Insulator Resistance:	1000M Ohm max.
Temperature Rating:	.-50°C ~ 145°C
Contact Material:	Steel
Contact:	Tin-Nickel Plate
Dielectric Voltage:	750VAC
Durability:	50 Cycles min.
Application for:	Coin Type 2430, 2450, 2477
Battery Type: 1Cell	2477
Battery Type: 2Cell	2430

Dimension of Holder

Inch					
C	H	L			
0,074	0,503	0,805			

mm					
C	H	L			
1,9	12,8	20,5			

Ordering Information

Serie	Contact Material	Contact Plating	ROHS	Packing		
-------	------------------	-----------------	------	---------	--	--

B23123	-	ST	NI	R	BU	
---------------	---	-----------	-----------	----------	-----------	--

		N= Non ROHS	BU= Bulk-Ware
		R= ROHS Conform	TR= Tape / Reel
ST= Steel	NI= Nickel plated		

**Battery Coin Cell Holder
THT**

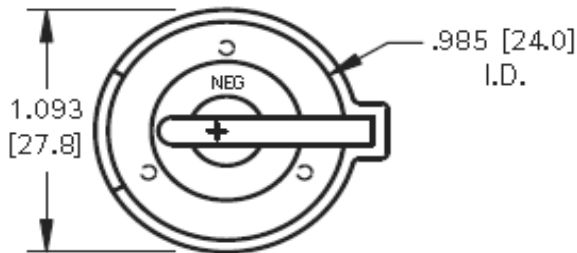
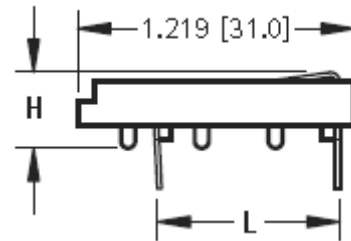
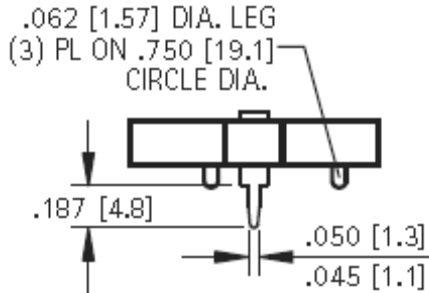
Part No.: **B23123**

Customer:

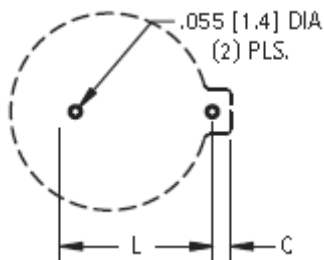
DRW:	Jason	CHKD	Jules	MATL:	Wu	DATE	04.11.2018
APPD:	Join			FINISH	Shieh	Sheet	1 from 3



Technical Dimensions (inch / mm)



PCB Layout (inch / mm)



**Battery Coin Cell Holder
 THT**

Part No.: **B23123**

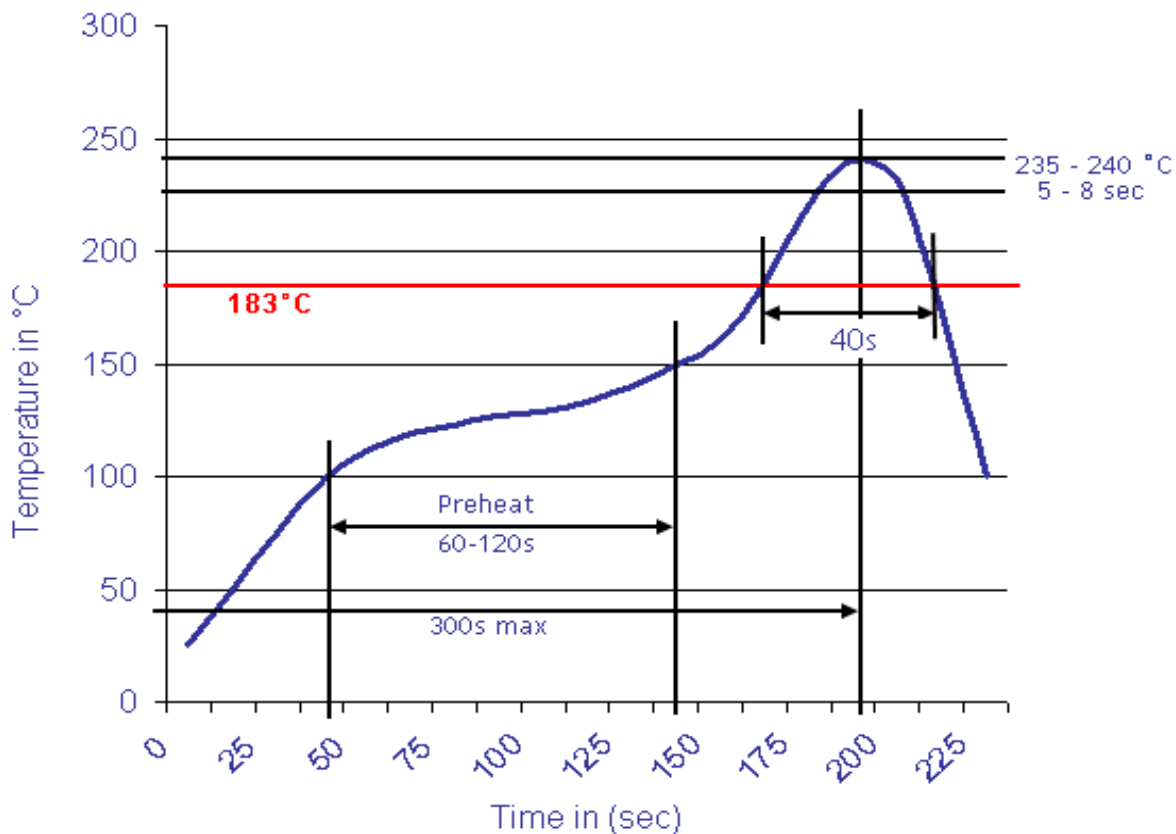
Customer:

DRW:	Jason	CHKD	Jules	MATL:	Wu	DATE	04.11.2018
APPD:	Join			FINISH	Shieh	Sheet	2 from 3



Soldering Profile Curve

Classification Reflow Profile (JEDEC J-STD-020C)



**Battery Coin Cell Holder
THT**

Part No.: **B23123**

Customer:

DRW:	Jason	CHKD	Jules	MATL:	Wu	DATE	04.11.2018
APPD:	Join			FINISH	Shieh	Sheet	3 from 3