



**Technical Specification**

Insulator Material: High Temperature Nylon 46 UL94V-0  
 Contact Resistance: 30m Ohm max.  
 Insulator Resistance: 1000M Ohm max.  
 Temperature Rating: -55°C ~ 85°C  
 Contact Material: Stainless Steel  
 Contact: Nickel Plate Tin / Gold Flash Plated  
 Dielectric Voltage: 750VAC  
 Durability: 50 Cycles min.  
 Application for: Coin Type

Battery Type: 1Cell 2012, 2016, 2020, 2025, 2032

**Dimension of Holder**

Inch					
		D	H		
		0,156	0,290		

mm					
		D	H		
		4,0	7,4		

**Ordering Information**

Serie	Contact Material	Contact Plating	ROHS	Packing		
-------	------------------	-----------------	------	---------	--	--

<b>B23110</b>	-	<b>ST</b>	<b>NI</b>	<b>R</b>	<b>BU</b>	
---------------	---	-----------	-----------	----------	-----------	--

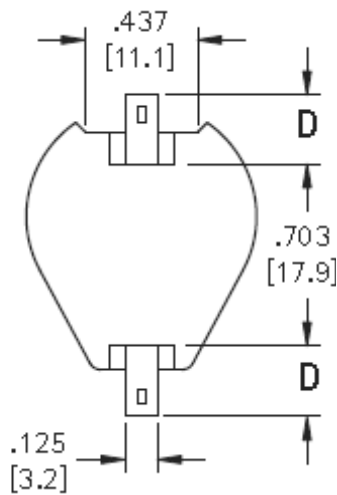
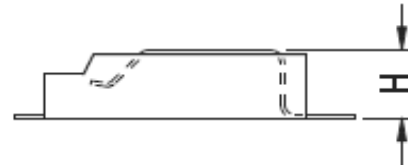
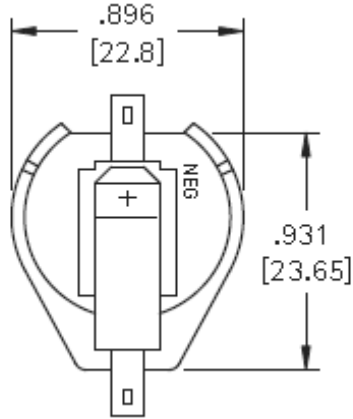
		<b>N=</b> Non ROHS	<b>BU=</b> Bulk-Ware
	<b>GF=</b> Gold Flash	<b>R=</b> ROHS Conform	<b>TR=</b> Tape / Reel
<b>ST=</b> Steel	<b>NI=</b> Nickel plated		

Battery Coin Cell Holder SMD	
Part No.:	<b>B23110</b>
Customer:	

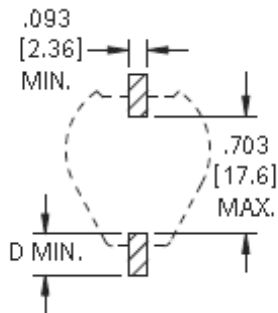
DRW:	Jason	CHKD	Jules	MATL:	Wu	DATE	04.11.2018
APPD:	Join			FINISH	Shieh	Sheet	1 from 3



**Technical Dimensions (inch / mm)**



**PCB Layout (inch / mm)**



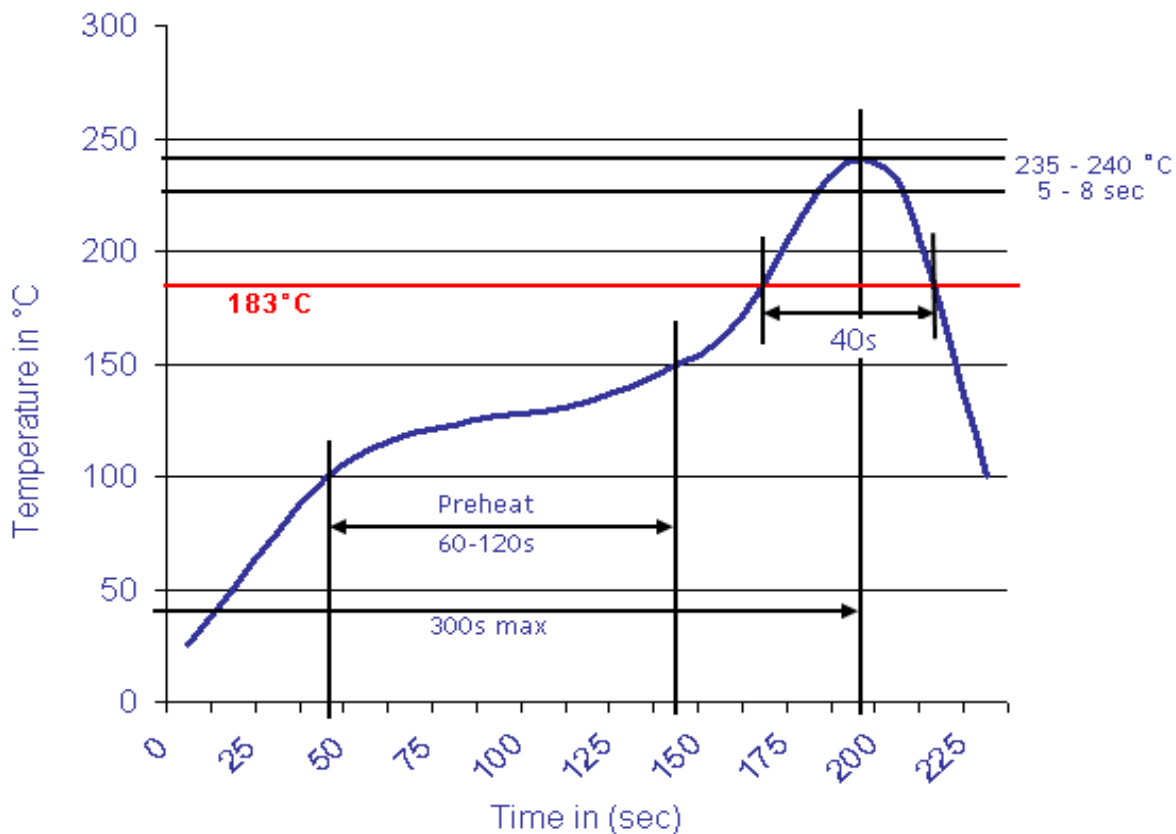
<b>Battery Coin Cell Holder SMD</b>	
Part No.:	<b>B23110</b>
Customer:	

DRW:	Jason	CHKD	Jules	MATL:	Wu	DATE	04.11.2018
APPD:	Join			FINISH	Shieh	Sheet	2 from 3



**Soldering Profile Curve**

**Classification Reflow Profile (JEDEC J-STD-020C)**



<b>Battery Coin Cell Holder SMD</b>	
Part No.:	<b>B23110</b>
Customer:	

DRW:	Jason	CHKD	Jules	MATL:	Wu	DATE	04.11.2018
APPD:	Join			FINISH	Shieh	Sheet	3 from 3