

Data Sheet

Single Terminal

Pitch: 0,00 mm

Serie: A25030

Customer Information for special Item

EDCON Customer : 0

Customer Version No. : 0

EDCON-COMPONENTS



Technical Discription

Drawing (Dimension in mm)

Electrical	UL	IEC
Rated Voltage	250 Volt	
Rated Current	18A	
Wire Range		
Solid Wire		AWG 14~24
Stranged Wire		AWG 14~24
Withstanding Voltage		
Insulation Resistance		
Mechanical		
Operating Temperature		. -40°C ~ +115°C
Wire Strip Length		5mm
Dimensions		
Pitch (mm)		0,00
Poles		1
Materials		
Body		Brass / tin plated
Wire guard		Wire guard solder Pin
Terminal screw M3		Steel Zinc plating

Single Terminal	
Part No.:	A25030
Customer:	

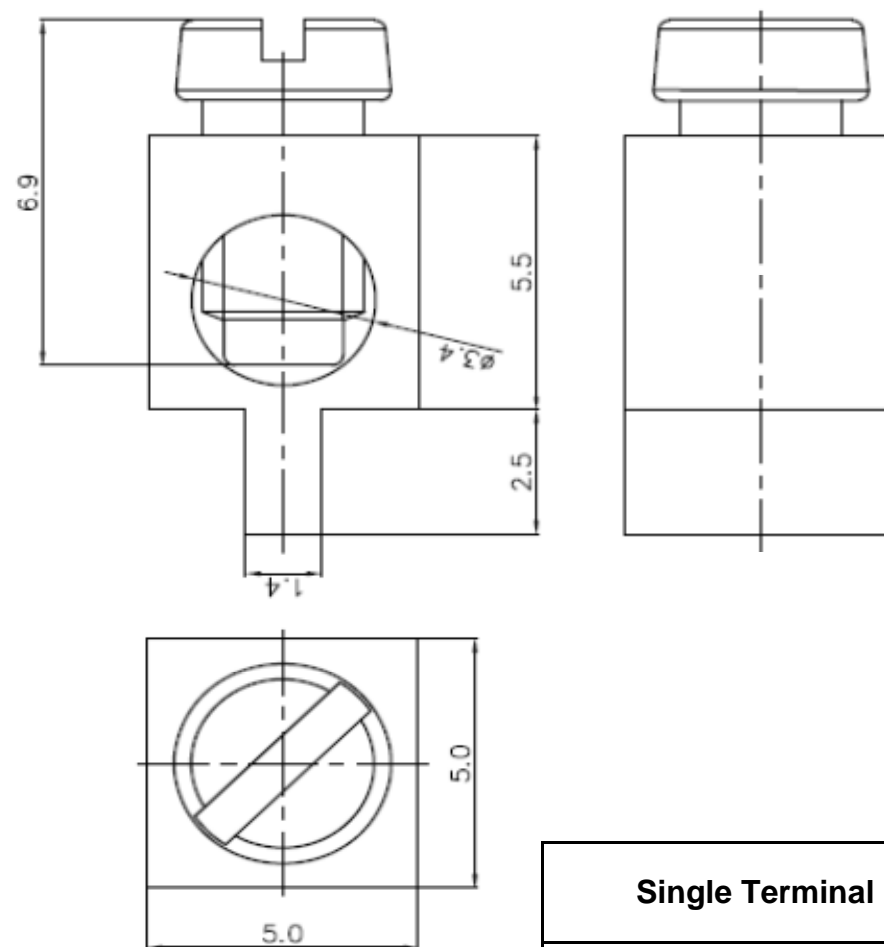
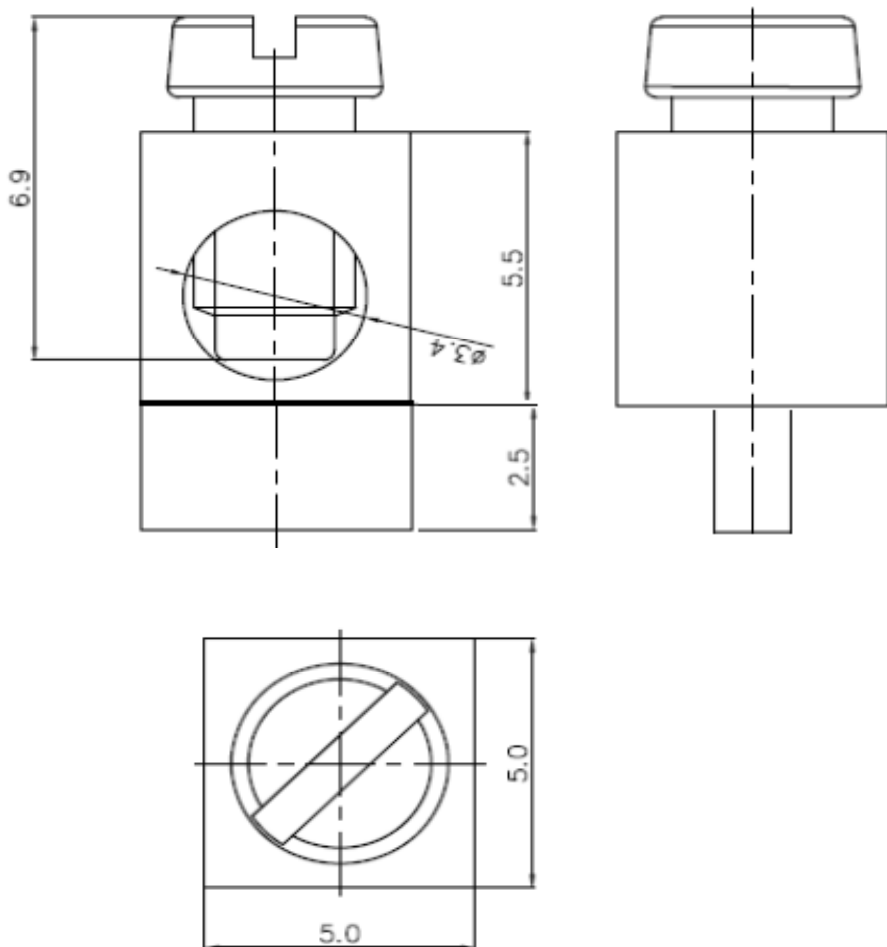
DRW:	Jason	CHKD	Wilson	MATL:	Wilson	TOLERANCE	Mason	DATE	02.12.2017
APPD:	Schumi			FINISH	Jamy		Sheet No.		1 from 4

EDCON-COMPONENTS



Dimensions (mm) Type 1 Solder Pin

Dimensions (mm) Type 2 Solder Pin



Single Terminal	
Part No.:	A25030
Customer:	

DRW:	Jason	CHKD	Wilson	MATL:	Wilson	TOLERANCE	Mason	DATE	02.12.2017
APPD:	Schumi			FINISH	Jamy		Sheet No.	2 from 4	

www.edcon-components.com

email: info@edcon-components.com

EDCON-COMPONENTS



Ordering Informations

Serie	No. of Pos.	Special Function	Type of Terminal	Special Function	ROHS	Packing				
A25030	01	N	1	N	R	B				

01 = Number of Pos.	N = NO Function	1 = Type of Solder Pin	N = NO Function	R = ROHS Conform	B = Bulk-Ware
		2 = Type of Solder Pin		N = NON ROHS Conform	

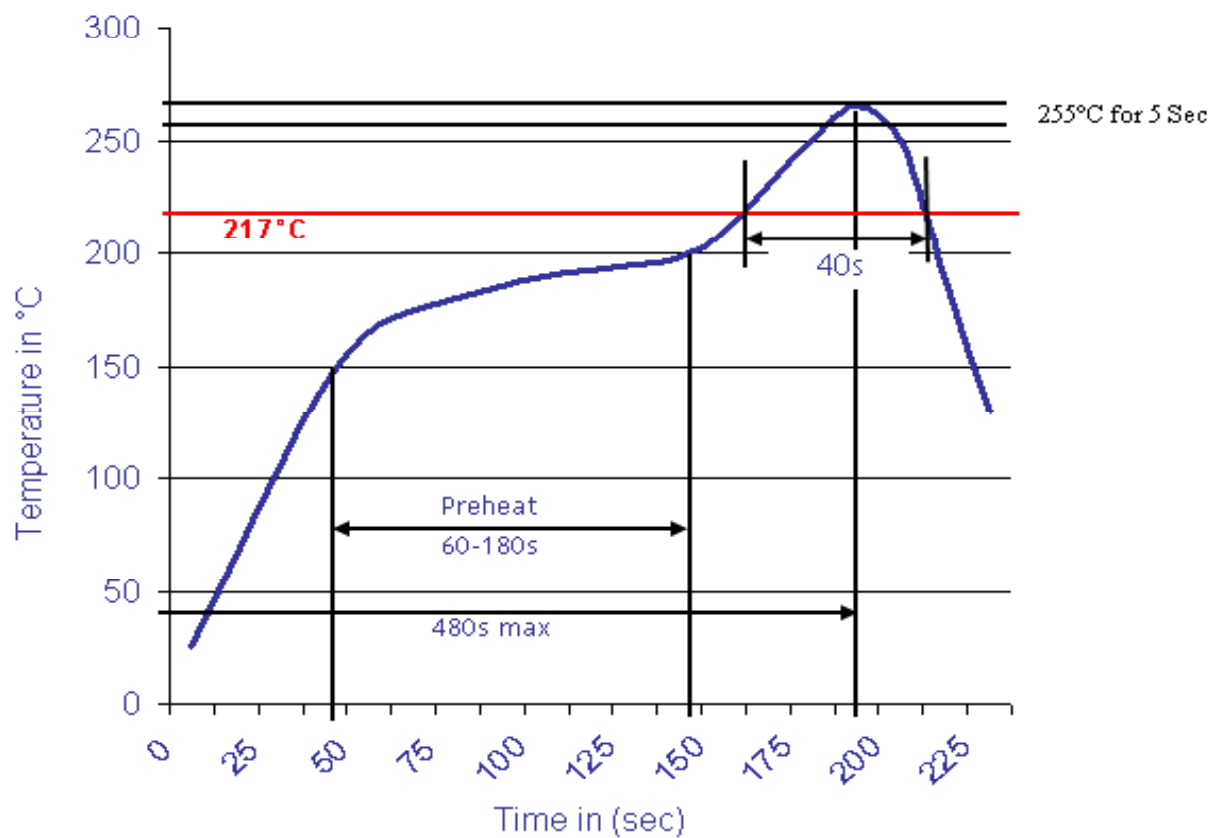
Single Terminal
Part No.: A25030
Customer:

DRW:	Jason	CHKD	Wilson	MATL:	Wilson	TOLERANCE	Mason	DATE	02.12.2017
APPD:	Schumi			FINISH	Jamy			Sheet No.	3 from 4



Soldering Profile Curve

Classification Reflow Profile (JEDEC J-STD-020C)



Single Terminal	
Part No.:	A25030
Customer:	

DRW:	Jason	CHKD	Wilson	MATL:	Wilson	TOLERANCE	Mason	DATE	02.12.2017
APPD:	Schumi			FINISH	Jamy		Sheet No.	4 from 4	