

# EDCON-COMPONENTS



## Technical Discription

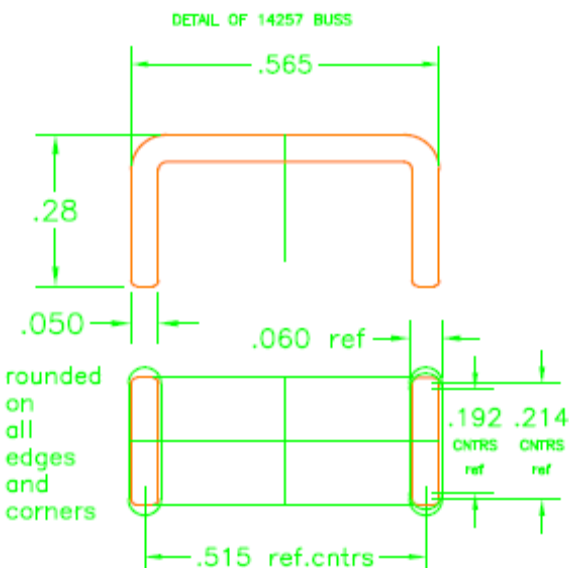
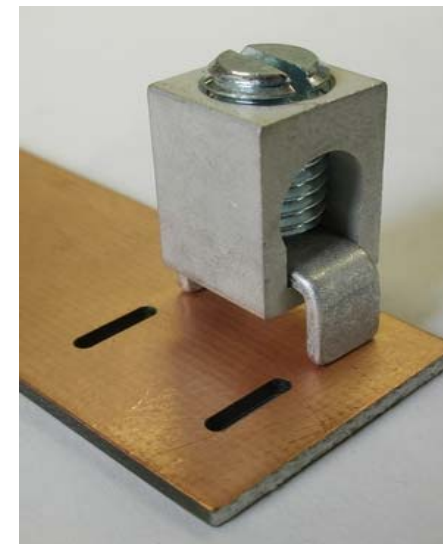
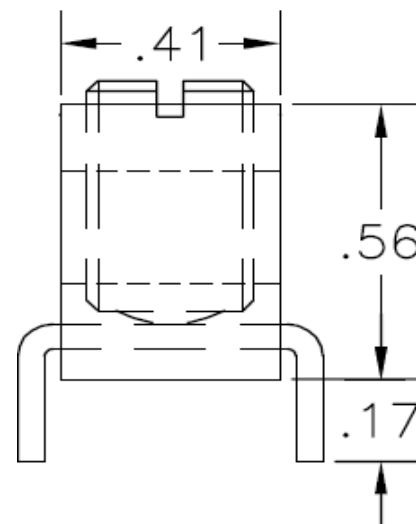
## Drawing (Dimension in mm)

### Electrical

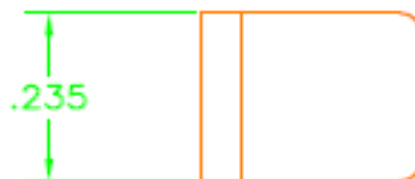
Rated Current 100A

### Materials

Terminal Screw Brass Tin Plated  
Screw Fe Ni-plated



SHOWING 14257 BUSS STAPLE ASSEMBLED WITH #22A WIRE CONNECTOR and 12782 STEEL SCREW



Board requires a routed slot .06 wide x 0.192/0,214 cntrs. Long on 0.515 centers. Hole size in board can be varied to control fir from drop-in to force fit on corners. An assembly of three connectors requires two staple bus parts to be ordered with each three connectors. All PCB layouts are tested by user for satisfactory performance. IHI does not guarantee the performance of any end use configuration.

## PCB Power Terminal Block

Part No.: **A25023**

Customer:

DRW:	Jason	CHKD	Wilson	MATL:	Wilson	TOLERANCE	Mason	DATE	23.04.2012
APPD:	Schumi			FINISH	Jamy		Sheet No.		1 from 3

[www.edcon-components.com](http://www.edcon-components.com)

email: [info@edcon-components.com](mailto:info@edcon-components.com)

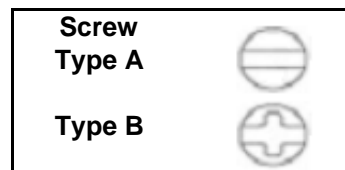
# EDCON-COMPONENTS



## Ordering Informations

Serie	No. of Pos.	Body Color	Screw Type	ROHS	Packing					
<b>A25023</b>	<b>01</b>	<b>TN</b>	<b>A</b>	<b>R</b>	<b>BU</b>					

01= Number of Pos.	TN= Tinned	A= Slotted Screw Type (Standard)	R= ROHS Conform	BU= Bulk-Ware		
		B= Cross Slotted Screw Type	N= NON ROHS Conform			



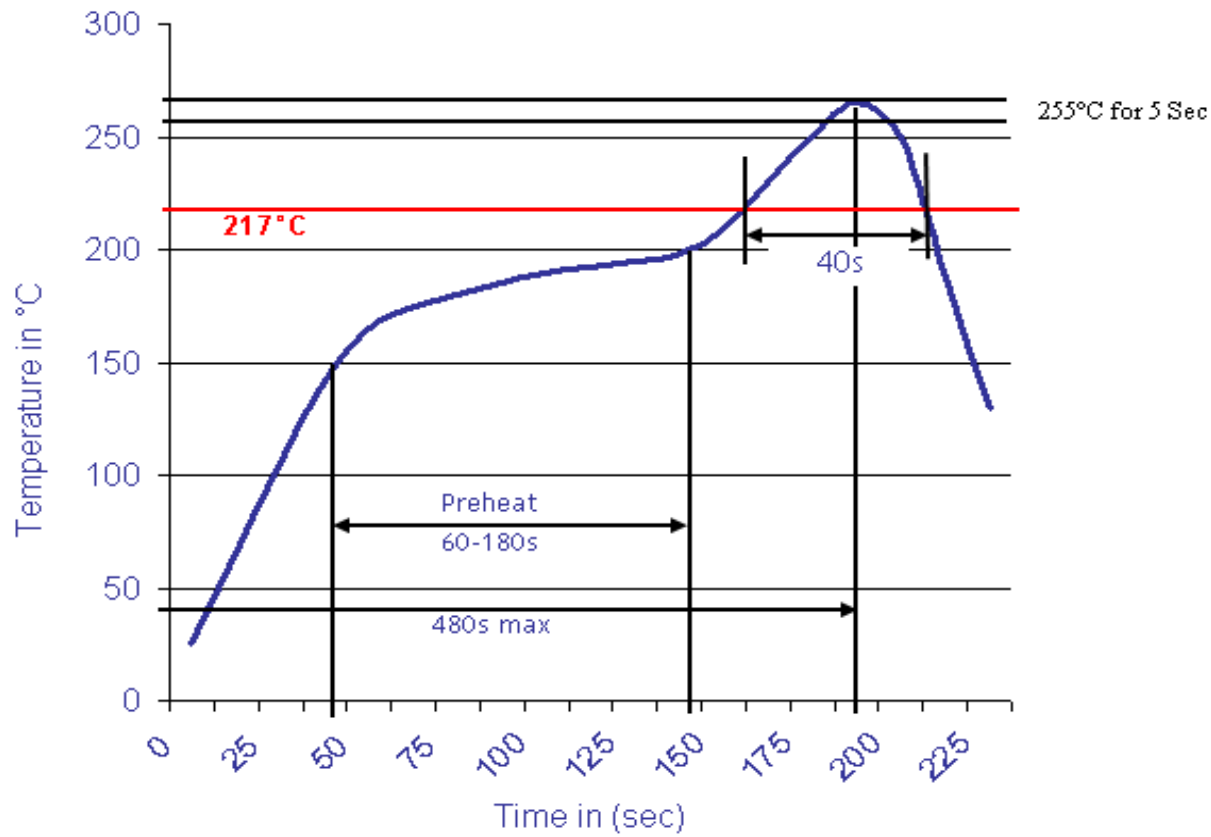
<b>PCB Power Terminal Block</b>
Part No.: <b>A25023</b>
Customer:

DRW:	Jason	CHKD	Wilson	MATL:	Wilson	TOLERANCE	Mason	DATE	23.04.2012
APPD:	Schumi			FINISH	Jamy		Sheet No.		2 from 3



Soldering Profile Curve

Classification Reflow Profile (JEDEC J-STD-020C)



<b>PCB Power Terminal Block</b>	
Part No.:	<b>A25023</b>
Customer:	

DRW:	Jason	CHKD	Wilson	MATL:	Wilson	TOLERANCE	Mason	DATE	23.04.2012
APPD:	Schumi			FINISH	Jamy		Sheet No.	3 from 3	