

Data Sheet

Plug Terminal Block Screwless (Inverted)

Pitch: 5,08 mm

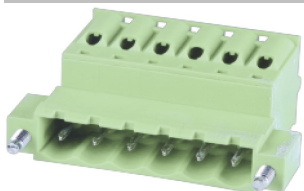
Serie: A14M171

Customer Information for special Item

EDCON Customer : xxxxxx

Customer Version No. : xx

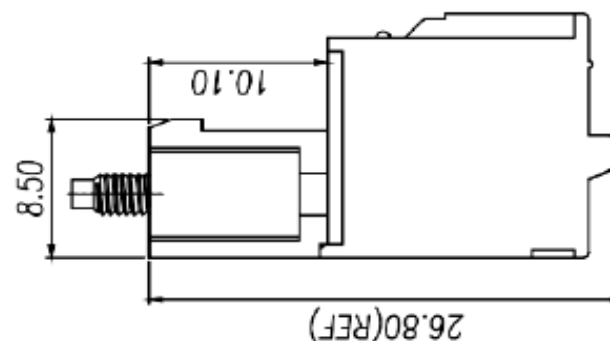
EDCON-COMPONENTS



Technical Discription

| Electrical | UL | IEC | TÜV |
|-------------------------------|--------------|-----|-----|
| Rated Voltage (V) | 300 | 320 | |
| Rated Current (A) | 10 | 12 | |
| Wire Range (mm ²) | 0,5~2,5 | | |
| Wire Range AWG-Size | 28 ~ 12 | | |
| Withstanding Voltage (KV) | 1,6 | 1,6 | |
| Impuls Withst Voltage (KV) | 4,0 | 4,0 | |
| Insulation Resistance | | | |
| Mechanical | | | |
| Operating Temperature (°C) | -40°C ~ +105 | | |
| Wire Strip Length (mm) | .9~10 | | |
| Screw Torque | | | |
| Screw Size | | | |
| Materials | | | |
| Terminal Housing | PA66 | | |
| Imflammability | UL94V-0 | | |
| Contact Material | Copper Alloy | | |
| Contact Surface: | Tin Plated | | |
| Pin Dimension: (mm) | 1,0x1,0 | | |
| PCB Hole Diameter (mm) | 1,7 | | |
| | | | |
| | | | |
| Nut | M3 | | |
| | | | |
| Dimensions | | | |
| Pitch (mm) | 5,08 | | |
| Poles | 2 ~ 24 Pos. | | |

Drawing (Dimension in mm)



| Tolerances unless otherwise specified (mm) | | | | |
|--|-----|------|-------|-------|
| x | x.x | x.xx | x.xxx | Angle |
| ± | ± | ± | ± | ±3° |

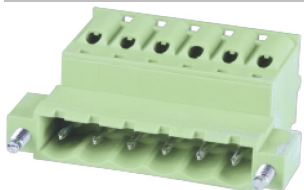
| | |
|--|----------------|
| Plug Terminal Block Screwless (Inverted) | |
| Part No.: | A14M171 |
| Customer: | |

| | | | | | | | | | |
|-------|--------|-------|--------|---------|--------|------------|-------|------------|------------|
| DRW: | Jason | CHKD: | Wilson | MATL: | Wilson | TOLERANCE: | Mason | DATE: | 23.07.2023 |
| APPD: | Schumi | | | FINISH: | Jamy | | | Sheet No.: | 1 from 3 |

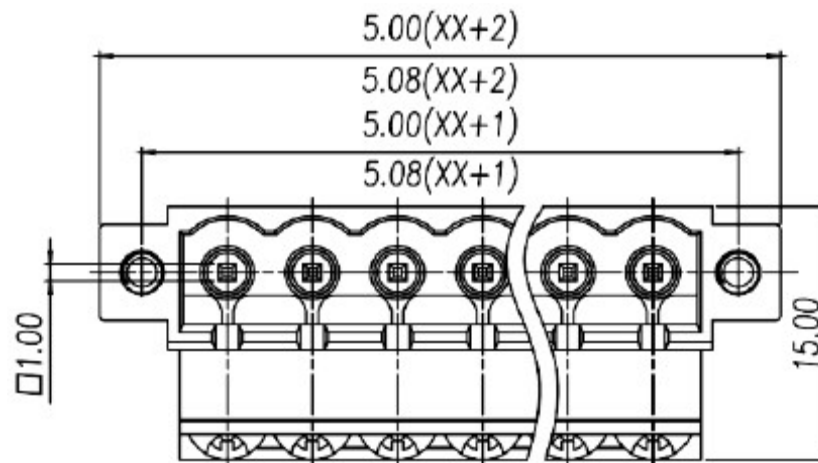
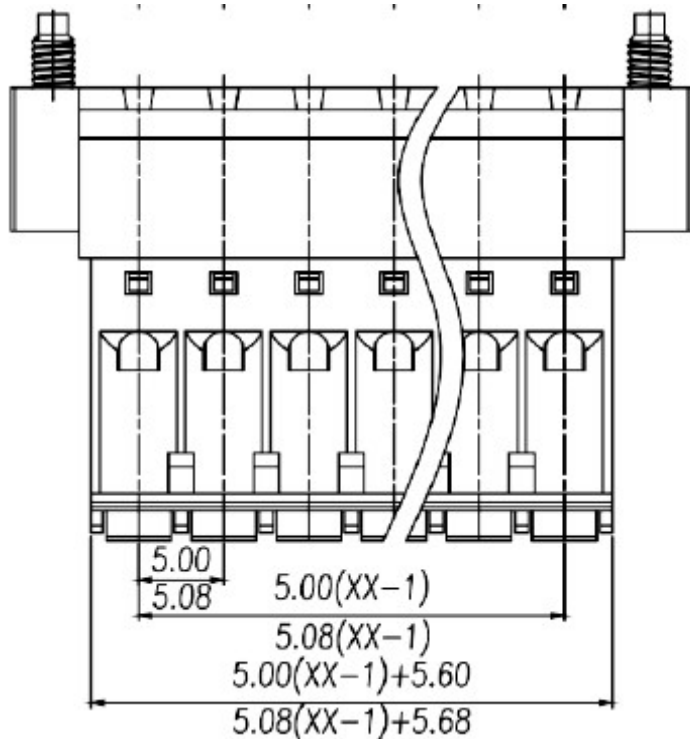
www.edcon-components.com

email: info@edcon-components.com

EDCON-COMPONENTS



Dimensions / Tolerance (mm)



Plug Terminal Block Screwless (Inverted)

Part No.: **A14M171**

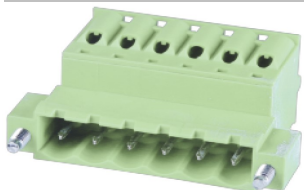
Customer:

| | | | | | | | | | |
|-------|--------|------|--------|--------|--------|-----------|-----------|------|------------|
| DRW: | Jason | CHKD | Wilson | MATL: | Wilson | TOLERANCE | Mason | DATE | 23.07.2023 |
| APPD: | Schumi | | | FINISH | Jamy | | Sheet No. | | 2 from 3 |

www.edcon-components.com

email: info@edcon-components.com

EDCON-COMPONENTS



Ordering Informations

| Serie | No. of Pos. | Body Color | No Function | Approval Code | ROHS | Packing | EDCON Cust. No. | Customer Version | | |
|----------------|-------------|------------|-------------|---------------|----------|----------|-----------------|------------------|--|--|
| A14M171 | 02 | PG | N | N | R | B | xxxxxx | xx | | |

Pitch
5,08

| | | | | | | | |
|--|---|------------------------|---|--|---|---------------------------------|--|
| 02 = Number of Pos. Standard 2 ~ 24 Pos. | PG = Phoenix Green (Standard) WH = White GN = Green GY = Gray LG = Light Gray OR = Orange BL = Blue BK = Black | N = No function | N = NON Approval 1 = UL-Approval for Material A = UL /UR Approval Please consult EDCON for available B = VDE Approval Please consult EDCON for available C = TÜV Approval Please consult EDCON for available | R = ROHS Conform N = NON ROHS Conform | B = Bulk-Ware I = Individual Package | xxxxxx = Customer Number | xx = Customer Version ??(Printing) |
|--|---|------------------------|---|--|---|---------------------------------|--|

| | |
|--|----------------|
| Plug Terminal Block Screwless (Inverted) | |
| Part No.: | A14M171 |
| Customer: | |

| | | | | | | | | | |
|-------|--------|------|--------|--------|--------|-----------|-----------|------|------------|
| DRW: | Jason | CHKD | Wilson | MATL: | Wilson | TOLERANCE | Mason | DATE | 23.07.2023 |
| APPD: | Schumi | | | FINISH | Jamy | | Sheet No. | | 3 from 3 |