

Data Sheet

Pin Header for Pluggable Terminal Block 1,3/1,3mm

Pitch: 5,00 mm

Serie: A14L160

Customer Information for special Item

EDCON Customer : 0

Customer Version No. : 0

EDCON-COMPONENTS



Technical Discription

Electrical:			
Rated voltage:	300V		
Rated current:	10A		
Withstanding Voltage: AC/1min:	2000V		
Operating Temperature:	-40°C ~ +105°C		
Insulation Resistance:	5000M Ω / DC1000V		
Contact Resistance:	20mΩ		

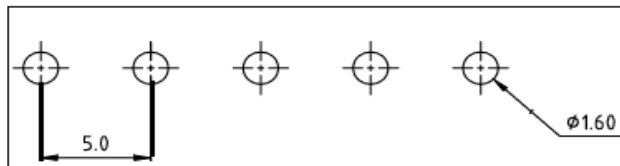
Mechanical:			

Material:	
Housing Terminal Body:	PA66 + 10%GF, UL94V-0
Pin Material Terminal:	Brass / Tin plated

Pin Header (Dimension in mm)

Order Code	Dimension (mm)		
	A	B	C
A01	7,4	9,0	12,9
A02			
A03			
A04			
A05			
A06			
A07			
A08			
A09			
A10			

PCB Layout (mm)

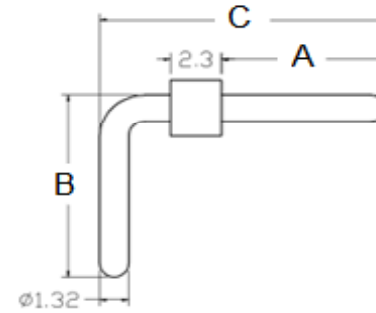
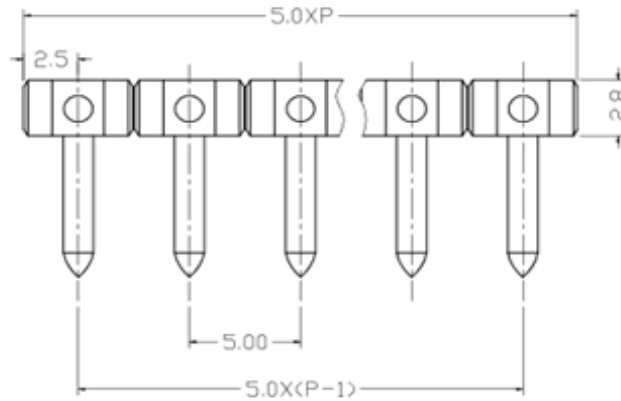


Tolerances unless otherwise specified (mm)				
x	x.x	x.xx	x.xxx	Angle
±	±	±	±	±3°
DRW:	Jason	CHKD	Wilson	MATL:
APPD:	Schumi		FINISH	Jamy
			Sheet No.	1 from 4

Pin Header for Pluggable Terminal Block 1,3/1,3mm	
Part No.:	A14L160
Customer:	



Drawing (Dimension in mm)



Pin Header for Pluggable Terminal Block 1,3/1,3mm
Part No.: A14L160
Customer:

DRW:	Jason	CHKD	Wilson	MATL:	Wilson	TOLERANCE	Mason	DATE	28.08.2023
APPD:	Schumi			FINISH	Jamy		Sheet No.	2 from 4	

EDCON-COMPONENTS



Ordering Informations

Serie	No. of Pos.	Pin Length order Code	Body Color	Approval Code	ROHS	Packing				
A14L160	XX	Axx	BK	N	R	BU				

Pitch
5,00

XX= Number of Pos. 2~24	Axx= look Pin Length order code table	BK= Black	N= NON Approval	R= ROHS Conform	BU= Bulk-Ware
		GY= Gray		N= NON ROHS Conform	IV= Individual Package
					TR= Tape Reel Packing with PIC and Place Cap
					TC= TUBE Packing with PIC and Place Cap

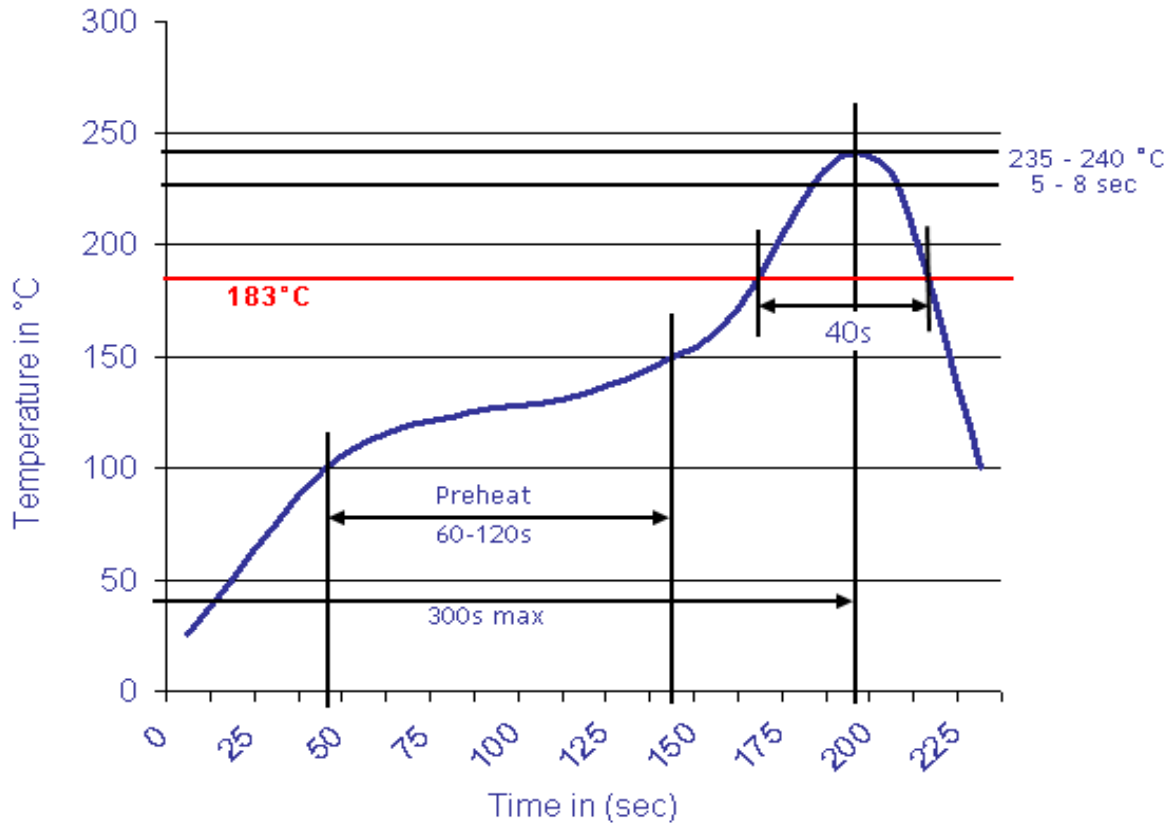
Pin Header for Pluggable Terminal Block 1,3/1,3mm	
Part No.:	A14L160
Customer:	

DRW:	Jason	CHKD	Wilson	MATL:	Wilson	TOLERANCE	Mason	DATE	28.08.2023
APPD:	Schumi			FINISH	Jamy		Sheet No.		3 from 4



Soldering Profile Curve

Classification Reflow Profile (JEDEC J-STD-020C)



Pin Header for Pluggable Terminal Block 1,3/1,3mm	
Part No.:	A14L160
Customer:	

DRW:	Jason	CHKD	Wilson	MATL:	Wilson	TOLERANCE	Mason	DATE	28.08.2023
APPD:	Schumi			FINISH	Jamy		Sheet No.		4 from 4