

Data Sheet

Wafer Dual Row Straight Terminal Block THR 2,60mm

Pitch: 3,50 mm

Serie: A14G130

Customer Information for special Item

EDCON Customer : xxxxxx

Customer Version No. : xx

EDCON-COMPONENTS



Technical Discription

技术数据-UL/CUL

| | | | |
|----------------------------------|-------|---|---|
| 等级 Use Group | B | C | D |
| 额定电压 Rate Voltage [V] | 300 | - | - |
| 额定电流 Rated Current [A] | 8 | - | - |
| 接线范围 Wire Range [AWG] | / | | |
| 耐电压 Dielectric Voltage-Withstand | 1.6KV | | |

技术参数-IEC

| | | | |
|--|-----|-----|-----|
| 过电压类别 Overvoltage Category | III | III | II |
| 污染等级 Contamination Class | 3 | 2 | 2 |
| 额定电压 Rated Voltage [V] | 160 | 160 | 250 |
| 额定电流 Rated Current [A] | 8 | 8 | 8 |
| 额定冲击电压 Impulse withstand voltage [KV] | 2.5 | 2.5 | 2.5 |
| 导线截面积(硬/柔) Conductor cross section [mm²] | / | | |

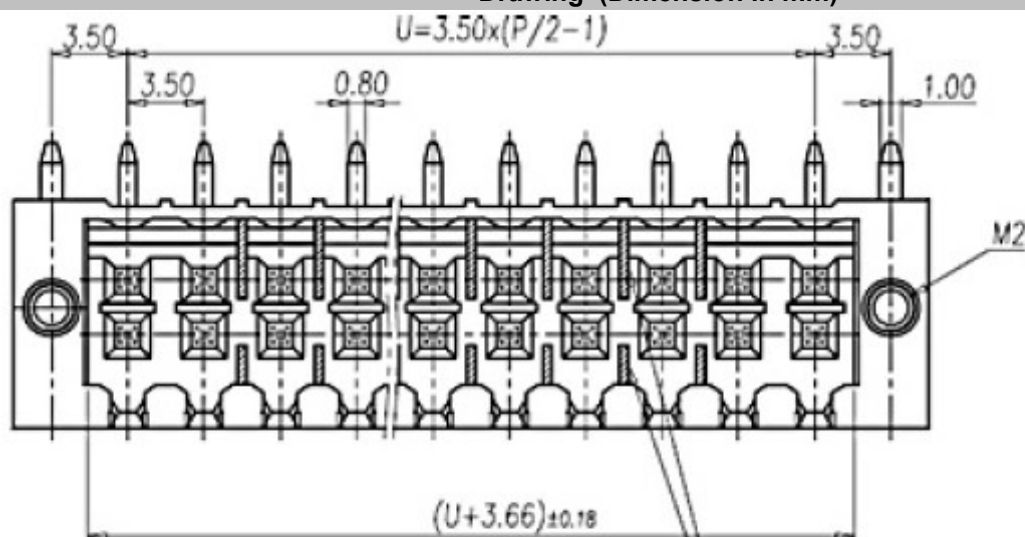
材料 Material

| | |
|-------------------------------------|--------------|
| 绝缘材料 Insulation Material | LCP |
| 阻燃等级 Flame retardant rating | UL94V-0 |
| 导体材料 Conductor Material | Copper alloy |
| 导体表面镀层 Plating of conductor surface | Sn plated |

一般参数 Other Data

| | |
|---------------------------------|---------------------|
| 间距/极数 Pitch/Poles [mm]/[P] | 3.5 , 3.81/2*2-2*24 |
| 剥线长度 Stripping Length [mm] | / |
| 螺丝/扭矩 Screw/Torque(Max)[N.m] | / |
| 工作温度 Operating temperature [°C] | -40~+130 |
| 焊锡温度 Soldering temperature | 285°C/10S |
| 引针尺寸 Pin dimensions [mm] | 0.8*0.8 |
| PCB板孔径 PCB Hole Diameter [mm] | Ø1.4 |

Drawing (Dimension in mm)



阴影助的数量表

| | | | | | | | | | |
|-----|------------|----|----|----|----|----|----|----|-----|
| P | 6 | 8 | 10 | 12 | 14 | 16 | 18 | 20 | 22 |
| 助数量 | 6-18P之间都有助 | | | | | | | | 7 8 |
| P | 24 | 26 | 28 | 30 | 32 | 34 | 36 | 38 | 40 |
| 助数量 | 7 | 8 | 7 | 8 | 7 | 8 | 9 | 10 | 11 |

Tolerances unless otherwise specified (mm)

| | | | | | | | | | |
|-------|--------|------|--------|--------|--------|-----------|-------|-----------|------------|
| X | X.X | X.XX | X.XXX | Angle | | | | | |
| ± | ± | ± | ± | ±3° | | | | | |
| DRW: | Jason | CHKD | Wilson | MATL: | Wilson | TOLERANCE | Mason | DATE | 03.05.2026 |
| APPD: | Schumi | | | FINISH | Jamy | | | Sheet No. | 1 from 4 |

Wafer Dual Row Straight Terminal Block THR 2,60mm

Part No.: **A14G130**

Customer:

www.edcon-components.com

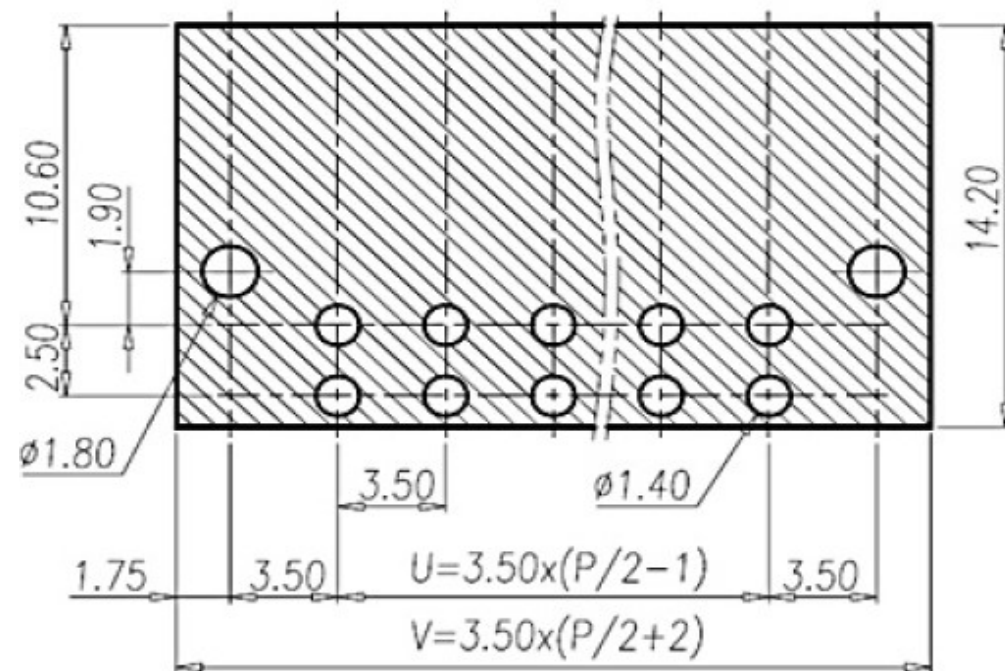
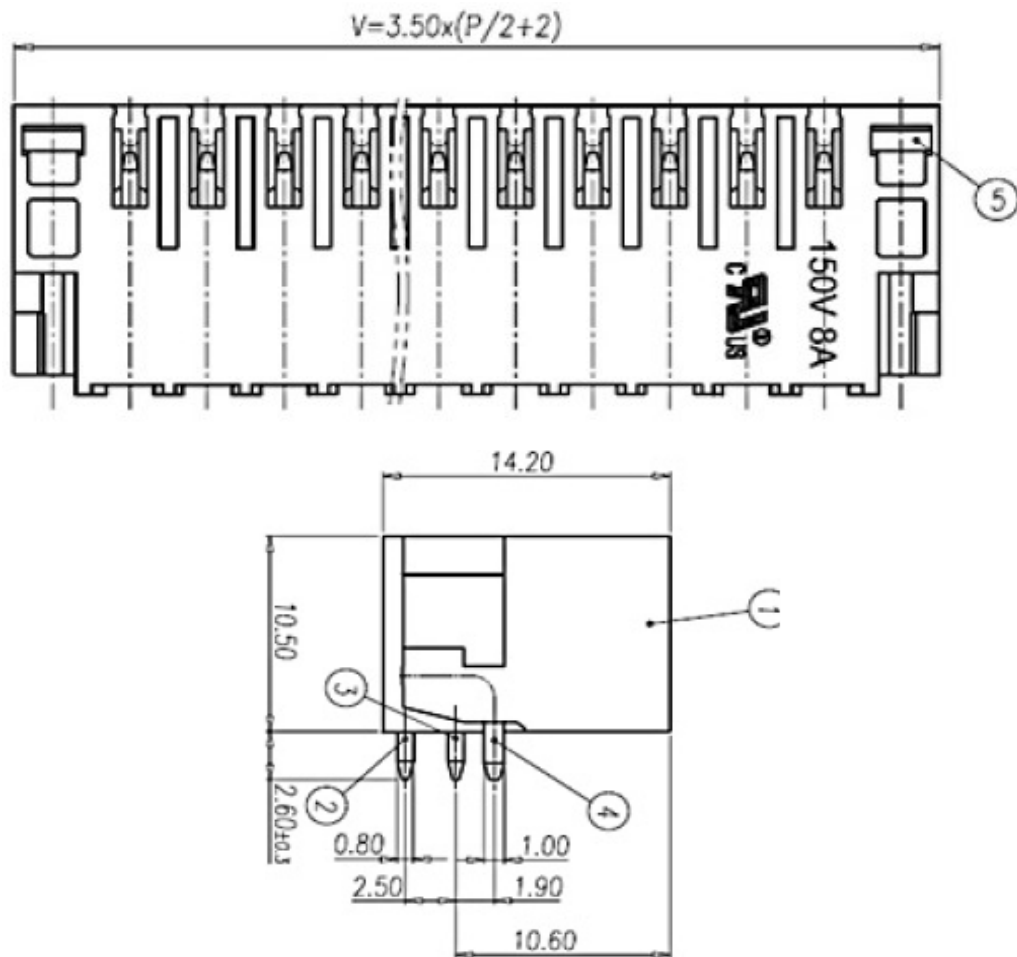
email: info@edcon-components.com

EDCON-COMPONENTS



Drawing (Dimension in mm)

PCB Layout (unit /mm) PCB View



| | |
|--|----------------|
| Wafer Dual Row Straight Terminal Block THR 2,60mm | |
| Part No.: | A14G130 |
| Customer: | |

| | | | | | | | | | |
|-------|--------|-------|--------|---------|--------|------------|-----------|-------|------------|
| DRW: | Jason | CHKD: | Wilson | MATL: | Wilson | TOLERANCE: | Mason | DATE: | 03.05.2026 |
| APPD: | Schumi | | | FINISH: | Jamy | | Sheet No. | | 2 from 4 |

www.edcon-components.com

email: info@edcon-components.com

EDCON-COMPONENTS



Ordering Informations

| Serie | No. of Pos. | Body Color | Special function | Approval Code | ROHS | Packing | EDCON Cust. No. | Customer Version | | |
|----------------|-------------|------------|------------------|---------------|----------|----------|-----------------|------------------|--|--|
| A14G130 | 04 | BK | N | N | R | B | xxxxxx | xx | | |

Pitch
3,50

| | | | | | |
|---|------------------|-------------------------------|--|---|--|
| 02= Number of Pos.2x2P Standard 2x2 ~ 2x24Pos. | | N= No special function | N= NON Approval 1= UL-Approval for Material A= UL /UR Approval Please consult EDCON for available B= VDE Approval Please consult EDCON for available C= TÜV Approval Please consult EDCON for available | R= ROHS Conform N= NON ROHS Conform B= Bulk-Ware I= Individual Package | xxxxxx= Customer Number xx= Customer Version ??(Printing) |
| | | | | | |
| | | | | | |
| | | | | | |
| | BK= Black | | | | |
| | | | | | |

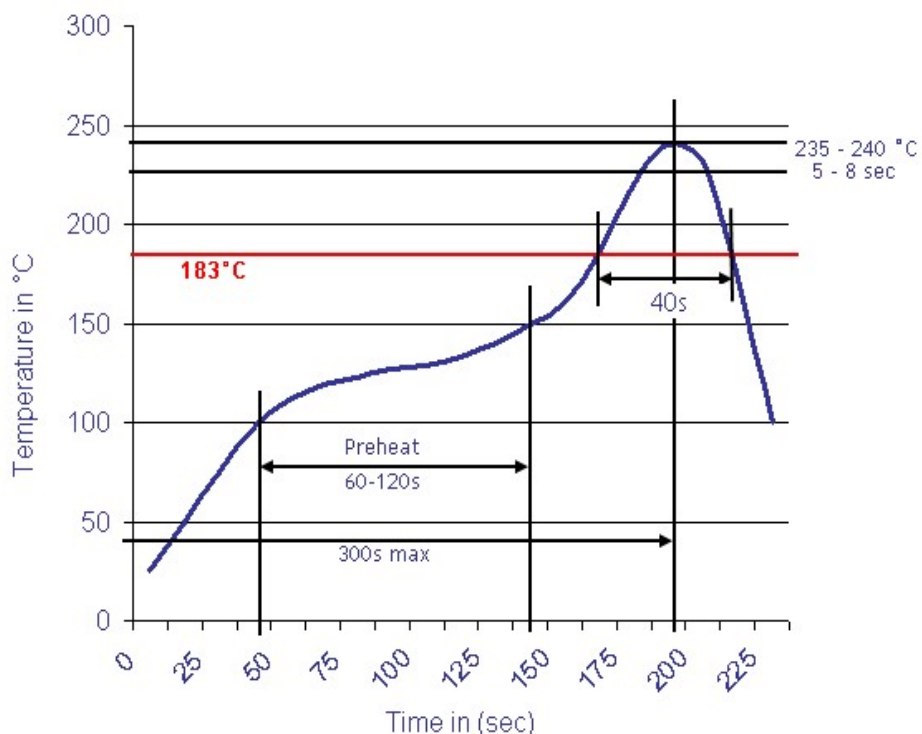
| | |
|--|----------------|
| Wafer Dual Row Straight Terminal Block THR 2,60mm | |
| Part No.: | A14G130 |
| Customer: | |

| | | | | | | | | | |
|-------|--------|------|--------|--------|--------|-----------|-----------|------|------------|
| DRW: | Jason | CHKD | Wilson | MATL: | Wilson | TOLERANCE | Mason | DATE | 03.05.2026 |
| APPD: | Schumi | | | FINISH | Jamy | | Sheet No. | | 3 from 4 |



Soldering Profile

Classification Reflow Profile (JEDEC J-STD-020C)



Classification Reflow Profile (JEDEC J-STD-020C)



| | |
|--|----------------|
| Wafer Dual Row Straight Terminal Block THR 2,60mm | |
| Part No.: | A14G130 |
| Customer: | |

| | | | | | | | | | |
|-------|--------|------|--------|--------|--------|-----------|-----------|------|------------|
| DRW: | Jason | CHKD | Wilson | MATL: | Wilson | TOLERANCE | Mason | DATE | 03.05.2026 |
| APPD: | Schumi | | | FINISH | Jamy | | Sheet No. | | 4 from 4 |