

# Data Sheet

**Wafer Dual Row R/A w. Srew Terminal Block THR 2,60mm**

**Pitch: 2,54 mm**

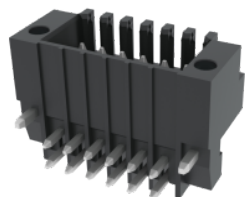
**Serie: A14F053**

**Customer Information for special Item**

**EDCON Customer : xxxxxx**

**Customer Version No. : xx**

# EDCON-COMPONENTS



## Technical Discription

### 技术数据-UL/CUL

等级 Use Group	B	C	D
额定电压 Rate Voltage [V]	150	-	-
额定电流 Rated Current [A]	5	-	-
接线范围 Wire Range [AWG]	-		
耐电压 Dielectric Voltage-Withstand	1.3KV		

### 技术参数-IEC

过电压类别 Overvoltage Category	III	III	II
污染等级 Contamination Class	3	2	2
额定电压 Rated Voltage [V]	80	160	320
额定电流 Rated Current [A]	6	6	6
额定冲击电压 Impulse withstand voltage [KV]	2.5	2.5	2.5
导线截面积(硬/柔) Conductor cross section [mm <sup>2</sup> ]	-		

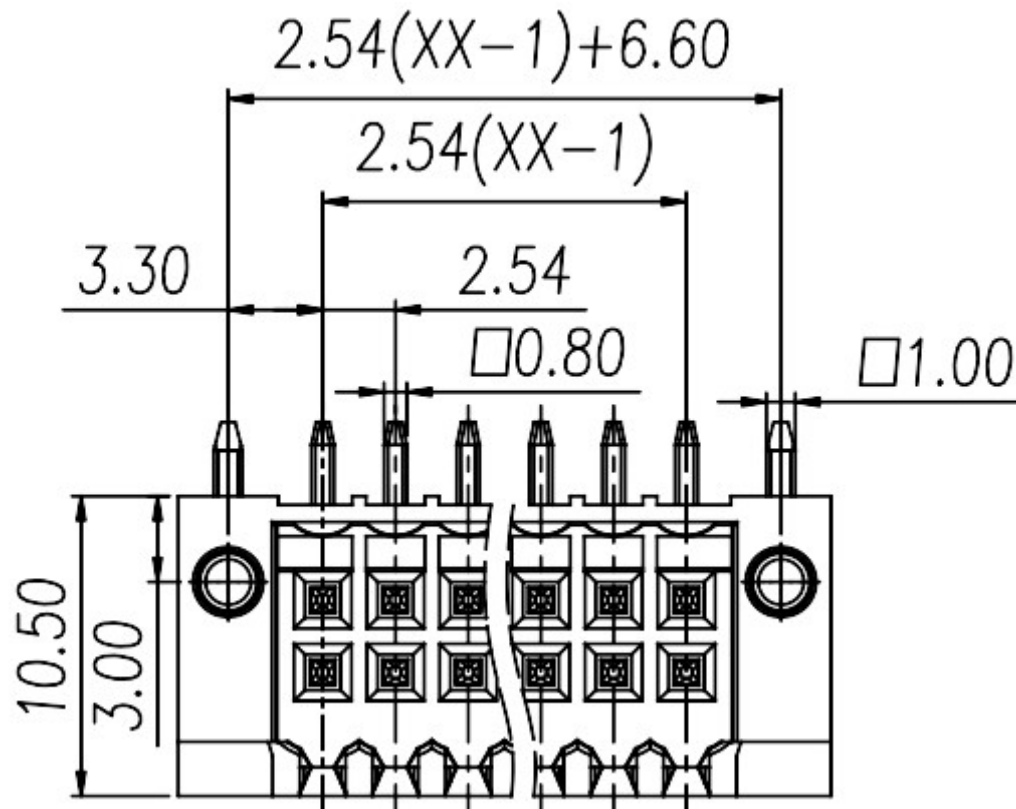
### 材料 Material

绝缘材料 Insulation Material	LCP
阻燃等级 Flame relardant rating	UL94V-0
导体材料 Conductor Material	Copper alloy
导体表面镀层 Plating of conductor surface	Sn plated

### 一般参数 Other Data

间距/极数 Pitch/Poles [mm]/[P]	2.54/2*2-2*24
剥线长度 Stripping Length [mm]	-
螺丝/扭矩 Screw/Torque(Max)[N.m]	-
工作温度 Operating temperature [°C]	-40°C~+130°C
焊锡温度 Soldering temperature	285°C/10S
引针尺寸 Pin dimensions [mm]	0.8*0.8
PCB板孔径 PCB Hole Diameter [mm]	Ø1.4

## Drawing (Dimension in mm)



Tolerances unless otherwise specified (mm)				
X	X.X	X.XX	X.XXX	Angle
±	±	±	±	±3°
Wilson	TOLERANCE	Mason	DATE	03.05.2026
Jamy			Sheet No.	1 from 4

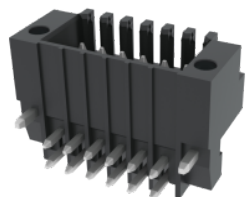
<b>Wafer Dual Row R/A w. Srew Terminal Block THR 2,60mm</b>	
Part No.:	<b>A14F053</b>
Customer:	

DRW:	Jason	CHKD:	Wilson	MATL:	
APPD:	Schumi			FINISH:	

[www.edcon-components.com](http://www.edcon-components.com)

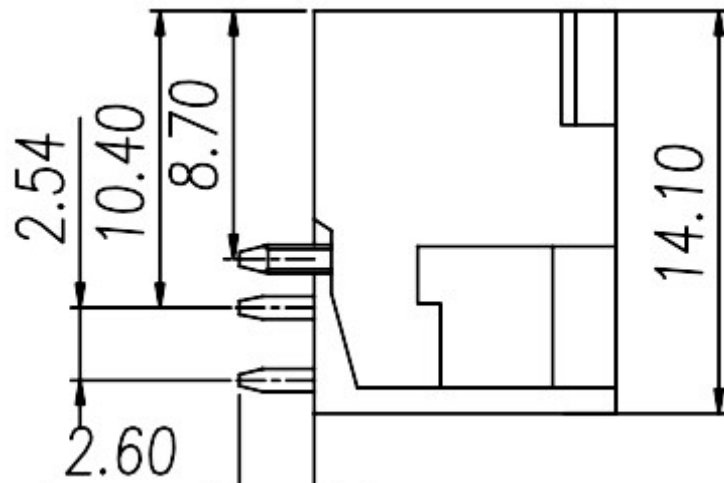
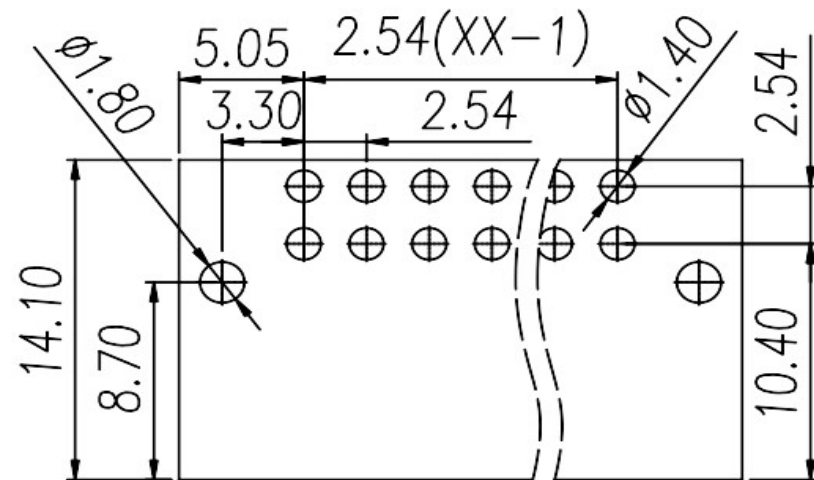
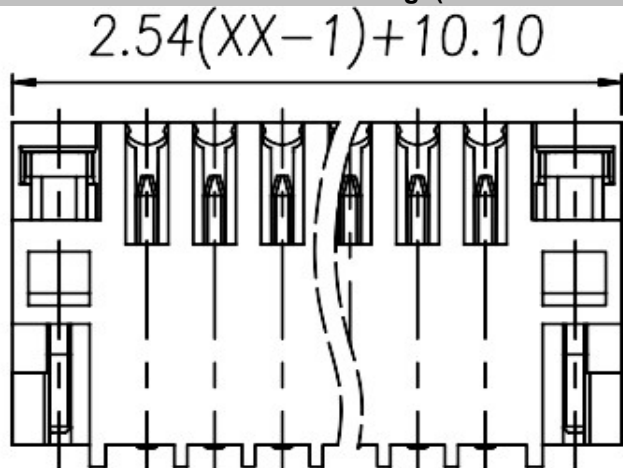
email: [info@edcon-components.com](mailto:info@edcon-components.com)

# EDCON-COMPONENTS



Drawing (Dimension in mm)

PCB Layout (unit /mm) PCB View



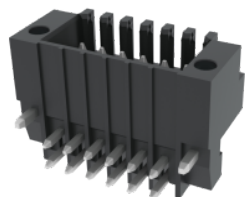
<b>Wafer Dual Row R/A w. Srew Terminal Block THR 2,60mm</b>	
Part No.:	<b>A14F053</b>
Customer:	

DRW:	Jason	CHKD	Wilson	MATL:	Wilson	TOLERANCE	Mason	DATE	03.05.2026
APPD:	Schumi			FINISH	Jamy		Sheet No.		2 from 4

[www.edcon-components.com](http://www.edcon-components.com)

email: [info@edcon-components.com](mailto:info@edcon-components.com)

# EDCON-COMPONENTS



## Ordering Informations

Serie	No. of Pos.	Body Color	Special function	Approval Code	ROHS	Packing	EDCON Cust. No.	Customer Version		
<b>A14F053</b>	<b>04</b>	<b>BK</b>	<b>N</b>	<b>N</b>	<b>R</b>	<b>B</b>	<b>xxxxxx</b>	<b>xx</b>		

Pitch  
2,54

02= Number of Pos.2x2P	N= No special function	N= NON Approval	R= ROHS Conform	B= Bulk-Ware	xxxxxx= Customer Number	xx= Customer Version ??(Printing)			
Standard 2x2 ~ 2x24Pos.							1= UL-Approval for Material	N= NON ROHS Conform	I= Individual Package
							A= UL /UR Approval Please consult EDCON for available		
							B= VDE Approval Please consult EDCON for available		
BK= Black							C= TÜV Approval Please consult EDCON for available		

<b>Wafer Dual Row R/A w. Srew Terminal Block THR 2,60mm</b>	
Part No.:	<b>A14F053</b>
Customer:	

DRW:	Jason	CHKD	Wilson	MATL:	Wilson	TOLERANCE	Mason	DATE	03.05.2026
APPD:	Schumi			FINISH	Jamy		Sheet No.		3 from 4



## Soldering Profile

### Classification Reflow Profile (JEDEC J-STD-020C)



### Classification Reflow Profile (JEDEC J-STD-020C)



**Wafer Dual Row R/A w. Srew  
Terminal Block THR 2,60mm**

Part No.: **A14F053**

Customer:

DRW:	Jason	CHKD	Wilson	MATL:	Wilson	TOLERANCE	Mason	DATE	03.05.2026
APPD:	Schumi			FINISH	Jamy		Sheet No.	4 from 4	