

Data Sheet

Dual-Row R/A Wafer Terminal Block THT 3,50mm

Pitch: 2,54 mm

Serie: A14F024

Customer Information for special Item

EDCON Customer : xxxxxx

Customer Version No. : xx

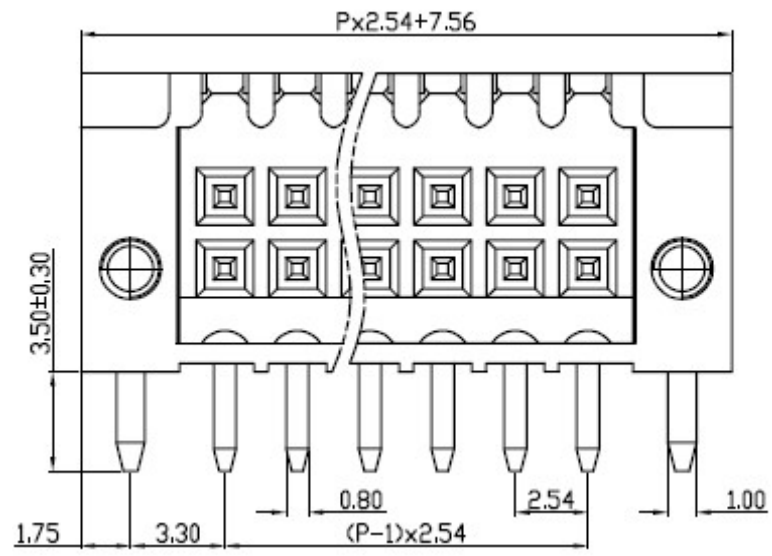
EDCON-COMPONENTS



Technical Discription

UL/CUL 技术参数		UL		
UL/CUL Technical Data		UL		
等级	Use Group	B	C	D
额定电压	Rated Voltage [V]	150	-	-
额定电流	Rated Current [A]	5	-	-
接线范围	Wire Range	-		
单/多芯线	Solid/Stranded [AWG]	-		
耐电压	Withstanding Voltage	1300V/1Min		
IEC 技术参数		IEC		
IEC Technical Data		IEC		
过电压类别	Overvoltage Category	III	III	II
污染等级	Contamination Class	3	2	2
额定电压	Rated Voltage [V]	-	160	320
额定电流	Rated Current [A]	-	6	6
额定冲击电压	Impulse withstand voltagea [KV]	-	2.5	2.5
导线截面积	Conductor cross section	-		
硬质/柔性导线	Solid/ flexible [mm ²]	-		
材料		Material		
绝缘材料	Insulation Material	PA46		
阻燃等级	Imflamability	UL94V-0		
导体材料	Contactior Material	铜合金 Copper alloy		
导体表面镀层	Contactive Coating	镀锡 Tin Plated		
一般参数		Other Data		
间距	Pitch [mm]	2.54		
极数	Poles [P]	2x(02-24)		
剥线长度	Stripping Length [mm]	-		
螺丝	Screw/扭矩 Torque(Max) [N.m]	-		
工作温度	Operating temperatur [°C]	-40~+120		
引针尺寸	Pin Dimensions [mm]	2.60		
PCB板孔径	PCB Hole Diameter [mm]	Ø1.40 / Ø1.80		

Drawing (Dimension in mm)



Tolerances unless otherwise specified (mm)				
X	X.X	X.XX	X.XXX	Angle
±	±	±	±	±3°
MATL:	Wilson	TOLERANCE	Mason	DATE 03.05.2026
APPD:	Schumi	FINISH	Jamy	Sheet No. 1 from 4

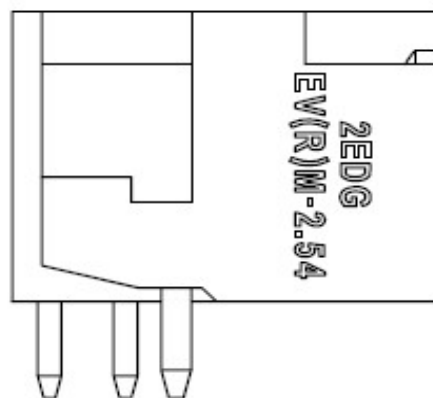
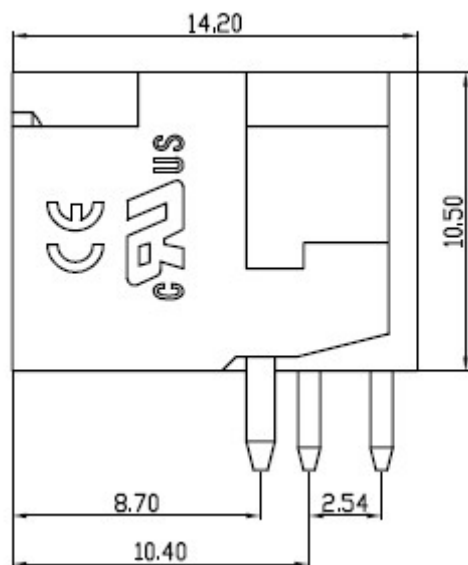
Dual-Row R/A Wafer Terminal Block THT 3,50mm
 Part No.: **A14F024**

Customer:

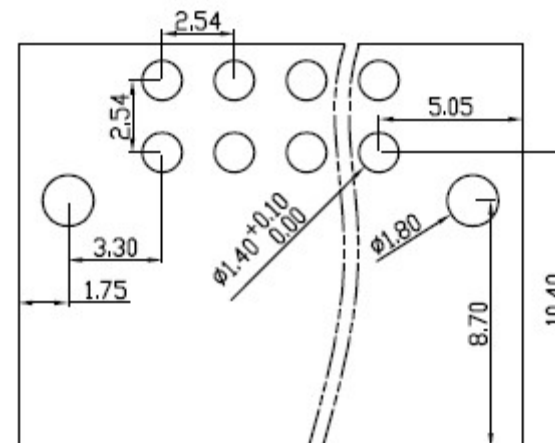
EDCON-COMPONENTS



Drawing (Dimension in mm)



PCB Layout (unit /mm) PCB-View



Dual-Row R/A Wafer Terminal Block THT 3,50mm	
Part No.:	A14F024
Customer:	

DRW:	Jason	CHKD:	Wilson	MATL:	Wilson	TOLERANCE:	Mason	DATE:	03.05.2026
APPD:	Schumi	FINISH:	Jamy			Sheet No.:			2 from 4

www.edcon-components.com

email: info@edcon-components.com

EDCON-COMPONENTS



Ordering Informations

Serie	No. of Pos.	Body Color	Special function	Approval Code	ROHS	Packing	EDCON Cust. No.	Customer Version		
A14F024	04	BK	N	N	R	B	xxxxxx	xx		

Pitch
2,54

04 = Number of Pos.2x2P		N = No special function	N = NON Approval	R = ROHS Conform	B = Bulk-Ware	xxxxxx = Customer Number	xx = Customer Version ??(Printing)
Standard 4 ~ 48Pos.			1 = UL-Approval for Material	N = NON ROHS Conform	I = Individual Package		
			A = UL /UR Approval Please consult EDCON for available				
	BK = Black		B = VDE Approval Please consult EDCON for available				
			C = TÜV Approval Please consult EDCON for available				

Dual-Row R/A Wafer Terminal Block THT 3,50mm	
Part No.:	A14F024
Customer:	

DRW:	Jason	CHKD	Wilson	MATL:	Wilson	TOLERANCE	Mason	DATE	03.05.2026
APPD:	Schumi			FINISH	Jamy		Sheet No.		3 from 4



Soldering Profile

Classification Reflow Profile (JEDEC J-STD-020C)



Classification Reflow Profile (JEDEC J-STD-020C)



**Dual-Row R/A Wafer Terminal
Block THT 3,50mm**

Part No.: **A14F024**

Customer:

DRW:	Jason	CHKD	Wilson	MATL:	Wilson	TOLERANCE	Mason	DATE	03.05.2026
APPD:	Schumi			FINISH	Jamy		Sheet No.	4 from 4	