

Data Sheet

THT Straight Dual-Row Wafer Terminal Block

Pitch: 2,54 mm

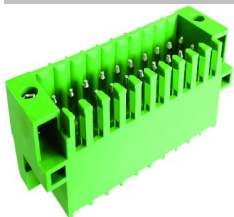
Serie: A14F021

Customer Information for special Item

EDCON Customer : xxxxxx

Customer Version No. : xx

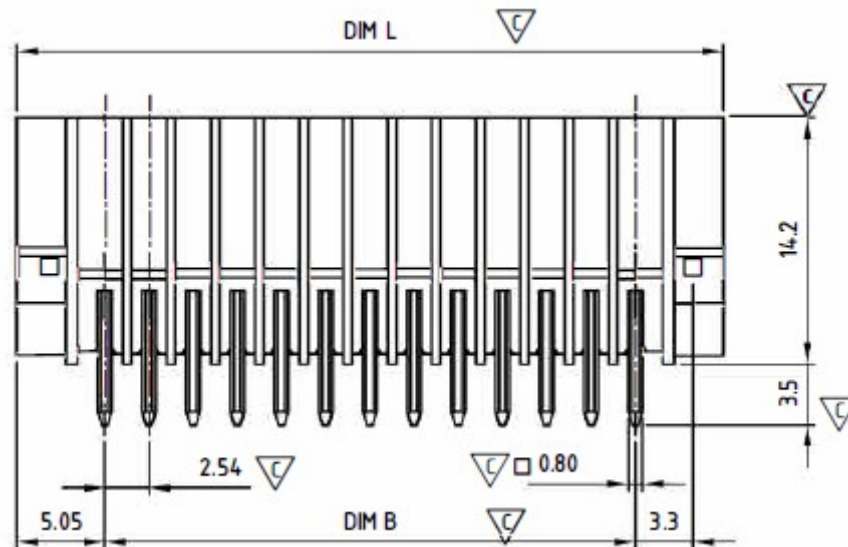
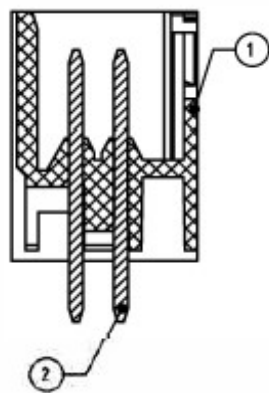
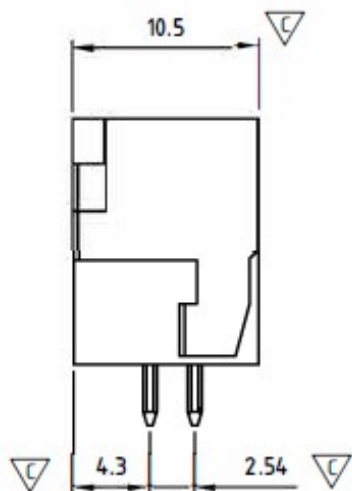
EDCON-COMPONENTS



Technical Description

1. Nominal voltage: 150V/5A
PITCH: 2.54mm
2. Insulation Withstanding Voltage:
AC 1300V/MIN
3. Insulation Resistance:
1000MΩ or more at DC500V
4. Using temperature range: -40°C ~ 115°C
Soldering temperature: 250±5°C/10s
5. Undimensioned Tolerances:

Drawing (Dimension in mm)



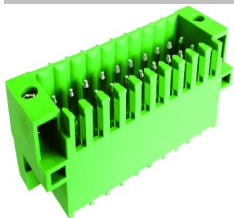
Tolerances unless otherwise specified (mm)				
X	X.X	X.XX	X.XXX	Angle
±	±	±	±	±3°
DRW:	Jason	CHKD	Wilson	MATL:
APPD:	Schumi			FINISH
Wilson	TOLERANCE	Mason	DATE	03.05.2026
Jamy		Sheet No.		1 from 4

THT Straight Dual-Row Wafer Terminal Block

Part No.: **A14F021**

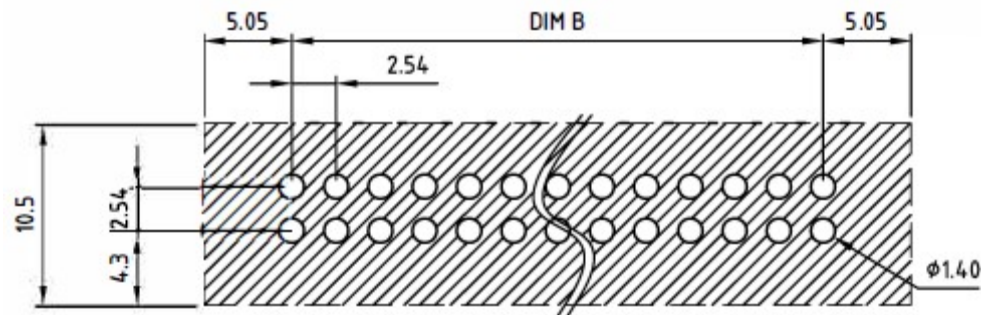
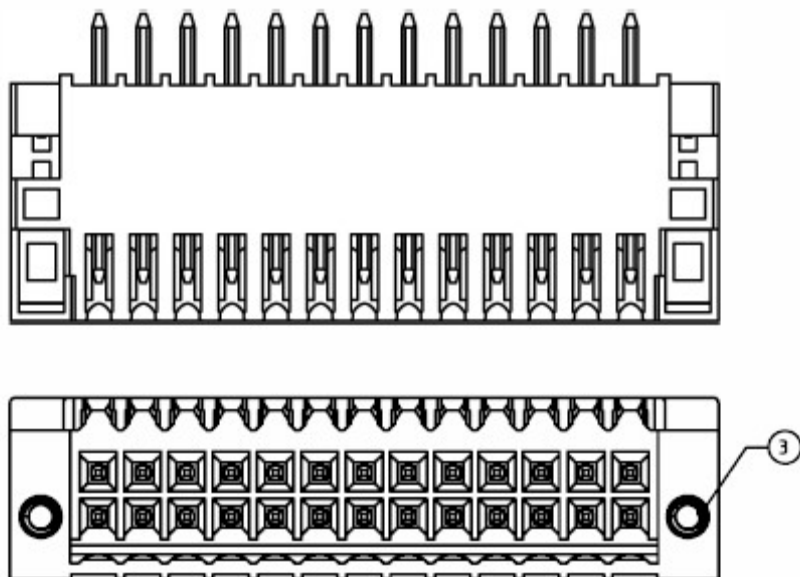
Customer:

EDCON-COMPONENTS



Drawing (Dimension in mm)

PCB Layout (unit /mm) PCB-View



4	FLANGE NUT	BRASS		2
3	PIN	COPPER	0.8×0.8 TIN PLATED	1/2P
2	PIN	COPPER	0.8×0.8 TIN PLATED	1/2P
1	BODY	PA66 UL94V-0	ALL COLOR	1
ITEM	NAME OF PART	MATERIAL	NOTES	Q"TY

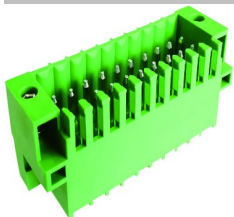
THT Straight Dual-Row Wafer Terminal Block	
Part No.:	A14F021
Customer:	

DRW:	Jason	CHKD	Wilson	MATL:	Wilson	TOLERANCE	Mason	DATE	03.05.2026
APPD:	Schumi			FINISH	Jamy		Sheet No.		2 from 4

www.edcon-components.com

email: info@edcon-components.com

EDCON-COMPONENTS



Ordering Informations

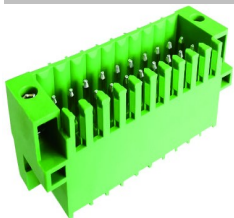
Serie	No. of Pos.	Body Color	Special function	Approval Code	ROHS	Packing	EDCON Cust. No.	Customer Version		
-------	-------------	------------	------------------	---------------	------	---------	-----------------	------------------	--	--

A14F021	04	PG	N	N	R	B	xxxxxx	xx		
----------------	-----------	-----------	----------	----------	----------	----------	---------------	-----------	--	--

Pitch 2,54	04 = Number of Pos.2x2P	PG = Phoenix Green (Standard)	N = No special function	N = NON Approval	R = ROHS Conform	B = Bulk-Ware	xxxxxx = Customer Number	xx = Customer Version ??(Printing)
	Standard 4 ~ 48Pos.			1 = UL-Approval for Material	N = NON ROHS Conform	I = Individual Package		
				A = UL /UR Approval Please consult EDCON for available				
				B = VDE Approval Please consult EDCON for available				
				C = TÜV Approval Please consult EDCON for available				

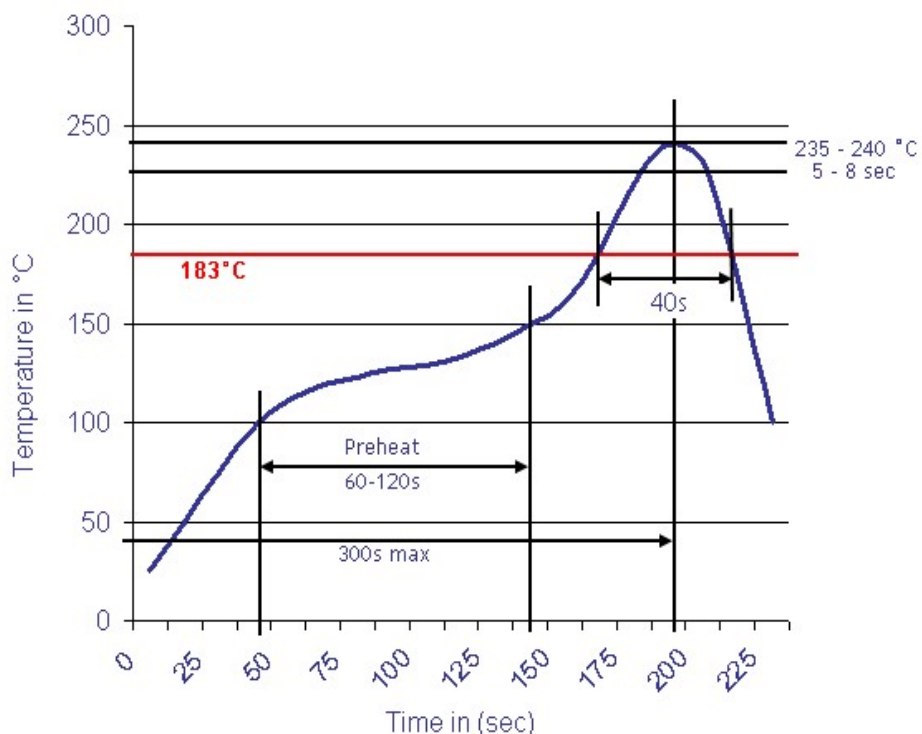
THT Straight Dual-Row Wafer Terminal Block	
Part No.:	A14F021
Customer:	

DRW:	Jason	CHKD	Wilson	MATL:	Wilson	TOLERANCE	Mason	DATE	03.05.2026
APPD:	Schumi			FINISH	Jamy		Sheet No.		3 from 4



Soldering Profile

Classification Reflow Profile (JEDEC J-STD-020C)



Classification Reflow Profile (JEDEC J-STD-020C)



THT Straight Dual-Row Wafer Terminal Block

Part No.: **A14F021**

Customer:

DRW:	Jason	CHKD	Wilson	MATL:	Wilson	TOLERANCE	Mason	DATE	03.05.2026
APPD:	Schumi			FINISH	Jamy		Sheet No.		4 from 4