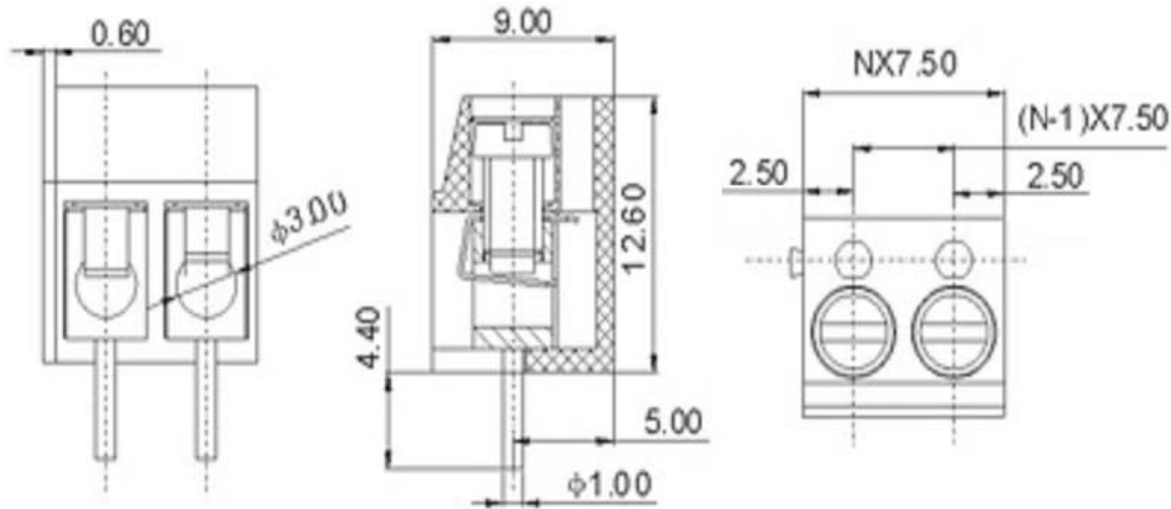


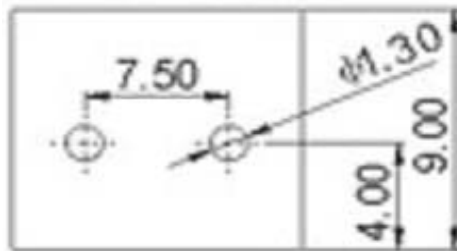
# EDCON-COMPONENTS



## Drawing



## P.C.B. Layout



## Specification

### APPROVAL

#### Electrical

Standard  
Rated voltage  
Rated current  
Wire range  
Withstanding voltage



|              |                    |
|--------------|--------------------|
| UL           | IEC                |
| 300V         | 250V               |
| 10A          | 24A                |
| 22-14 AWG    | 2.5mm <sup>2</sup> |
| AC2000V/1Min |                    |

#### Mechanical

Ambient temperature  
Strip length  
Screw, Torque

-30°C ~ +120°C  
5 ~ 6mm  
M3, 0.5Nm (4.4Lb-In.)

#### Dimensions

Pitch  
Poles

7.50mm  
2P, 3P-24P

#### Material

Housing  
Pin header  
Screw  
Wire guard

PBT (UL94V-0)  
Brass, Tin plated  
steel, Cr<sup>3+</sup> Zn plated  
Stainless steel



### Certification



Wire Protector Terminal Block /  
Pitch 7.50mm

Part No.: A12Q001

Customer:

|       |       |      |      |        |       |           |     |           |           |
|-------|-------|------|------|--------|-------|-----------|-----|-----------|-----------|
| DRW:  | Bill  | CHKD | Lord | MATL:  | Jimmy | TOLERANCE | Sam | DATE      | 14.3.2009 |
| APPD: | Louis |      |      | FINISH | Georg |           |     | Sheet No. | 1 from 3  |

[www.edcon-components.com](http://www.edcon-components.com)

email: [info@edcon-components.com](mailto:info@edcon-components.com)

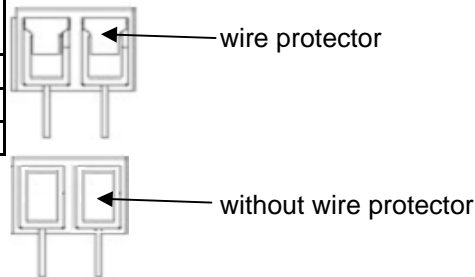
# EDCON-COMPONENTS



## Ordering Informations

| Serie   | - | No. of Pole | Body-Color | wire protector | Screw | - | Customer Request |
|---------|---|-------------|------------|----------------|-------|---|------------------|
| A12Q001 | - | XX          | XX         | X              | X     | - | X                |

|                    |                 |                            |                              |
|--------------------|-----------------|----------------------------|------------------------------|
| XX = total         | WH - white      | 1 - with wire protector    | A - Slotted screw (standard) |
|                    | GN - green      | 2 - without wire protector | B - Cross-slotted screw      |
|                    | GR - gray       |                            |                              |
|                    | BL - blue       |                            |                              |
| PG - Phoenix Green |                 |                            |                              |
|                    | OR - orange     |                            |                              |
|                    | LG - light gray |                            |                              |
|                    | BK - black      |                            |                              |



**Certification**



|  |         |
|--|---------|
| Wire Protector Terminal Block / Pitch 7.50mm |         |
| Part No.:                                    | A12Q001 |
| Customer:                                    |         |

|       |       |      |      |        |       |           |           |      |           |
|-------|-------|------|------|--------|-------|-----------|-----------|------|-----------|
| DRW:  | Bill  | CHKD | Lord | MATL:  | Jimmy | TOLERANCE | Sam       | DATE | 14.3.2009 |
| APPD: | Louis |      |      | FINISH | Georg |           | Sheet No. |      | 2 from 3  |

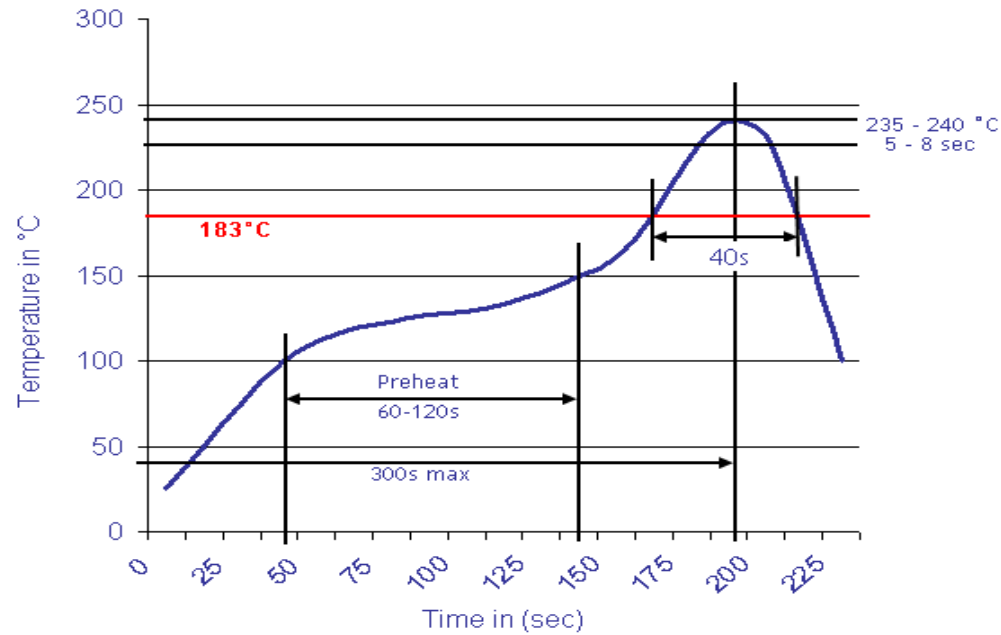
[www.edcon-components.com](http://www.edcon-components.com)

email: [info@edcon-components.com](mailto:info@edcon-components.com)



**Soldering - Profil**

**Classification Reflow Profile (JEDEC J-STD-020C)**



Wire Protector Terminal Block /  
Pitch 7.50mm

Part No.: A12Q001

Customer:

|       |       |      |      |        |       |           |           |          |           |
|-------|-------|------|------|--------|-------|-----------|-----------|----------|-----------|
| DRW:  | Bill  | CHKD | Lord | MATL:  | Jimmy | TOLERANCE | Sam       | DATE     | 14.3.2009 |
| APPD: | Louis |      |      | FINISH | Georg |           | Sheet No. | 3 from 3 |           |