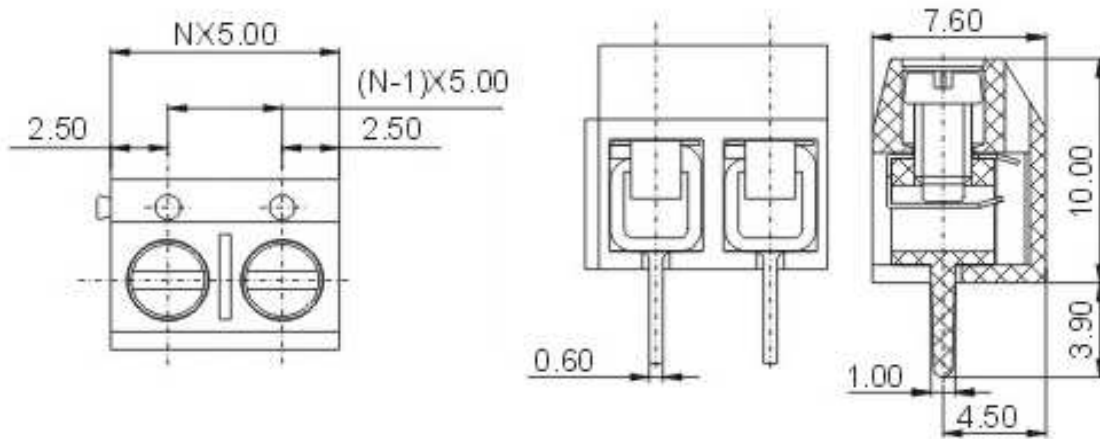


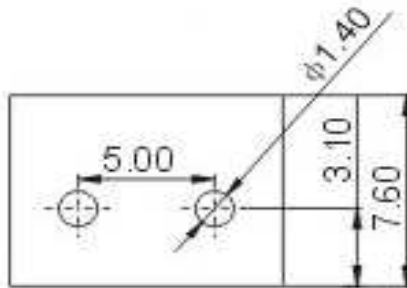
# EDCON-COMPONENTS



## Drawing



## P.C.B. Layout



## Specification

	UL	VDE
<b>APPROVAL</b>		
<b>Electrical</b>		
Standard	UL	IEC
Rated voltage	300V	250V
Rated current	10A	15A
Wire range	22-14 AWG	1.5mm <sup>2</sup>
Withstanding voltage	AC2000V/1Min	
<b>Mechanical</b>		
Ambient temperature	-30°C ~ +120°C	
Strip length	5 ~ 6mm	
Screw, Torque	M2.5, 0.4Nm (3.5Lb-In.)	
<b>Dimensions</b>		
Pitch	5.00mm	
Poles	2P, 3P-24P	
<b>Material</b>		
Housing	PBT (UL94V-0)	
Pin header	Brass, Tin plated	
Screw	steel, Cr <sup>3+</sup> Zn plated	
Wire guard	Stainless steel	



## Certification



Wire Protector Terminal Block /  
Pitch 5.00mm

Part No.: A12L002

Customer:

DRW:	Bill	CHKD	Lord	MATL:	Jimmy	TOLERANCE	Sam	DATE	14.03.2009
APPD:	Louis			FINISH	Georg			Sheet No.	1 from 3

[www.edcon-components.com](http://www.edcon-components.com)

email: [info@edcon-components.com](mailto:info@edcon-components.com)

Copyright by Siegfried Tiede

# EDCON-COMPONENTS



## Ordering Informations

Serie	-	No. of Pole	Body-Color	wire protector	Screw	-	Customer Request
A12L002	-	XX	XX	X	X	-	X

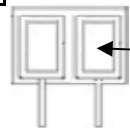
XX = total	WH - white	1 - with wire protector	A - Slotted screw (standard)
	GN - green	2 - without wire protector	B - Cross-slotted screw
	GR - gray		
	LG - light gray		



PG - Phoenix Green
OR - orange
BL - blue
BK - black



wire protector



without wire protector



**Certification**



Wire Protector Terminal Block /  
Pitch 5.00mm

Part No.: A12L002

Customer:

DRW:	Bill	CHKD	Lord	MATL:	Jimmy	TOLERANCE	Sam	DATE	14.03.2009
APPD:	Louis			FINISH	Georg			Sheet No.	2 from 3

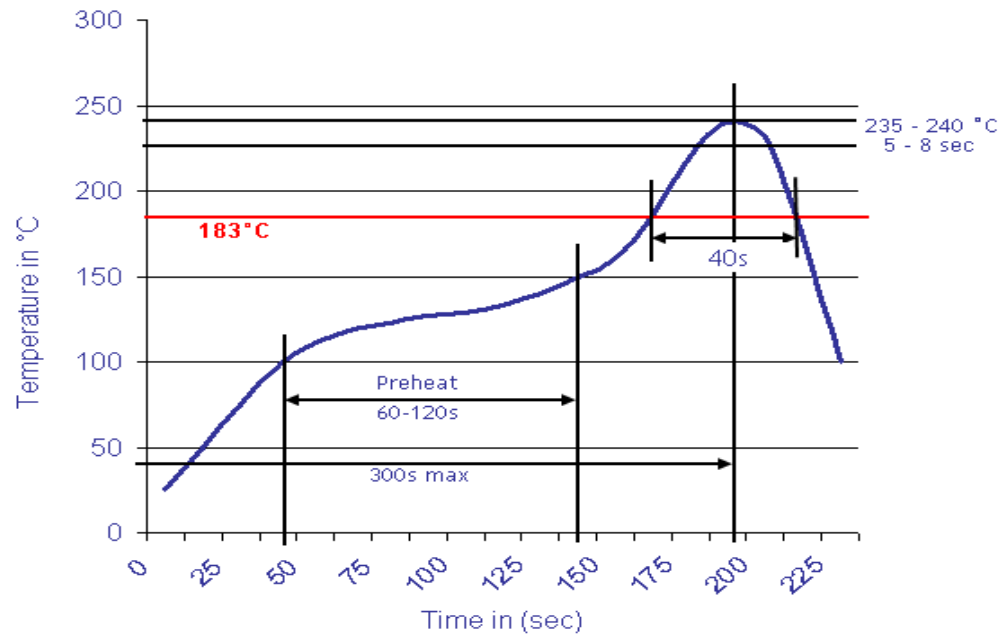
[www.edcon-components.com](http://www.edcon-components.com)

email: [info@edcon-components.com](mailto:info@edcon-components.com)



**Soldering - Profil**

Classification Reflow Profile (JEDEC J-STD-020C)



Wire Protector Terminal Block /  
Pitch 5.00mm

Part No.: A12L002

DRW:	Bill	CHKD	Lord	MATL:	Jimmy	TOLERANCE	Sam	DATE	14.03.2009
APPD:	Louis			FINISH	Georg		Sheet No.	3 from 3	

Customer: