

# Data Sheet

## Screwless Terminal Block

**Pitch: 10,16 mm**

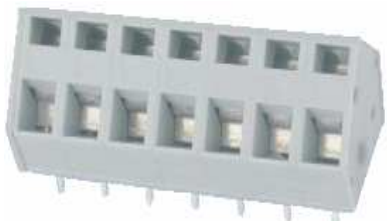
**Serie: A11U003**

### Customer Information for special Item

**EDCON Customer : 0**

**Customer Version No. : 0**

# EDCON-COMPONENTS



## Technical Discription

## Drawing (Dimension in mm)

### Electrical

Standard UL, VDE  
 Rated voltage 300V  
 Rated current 15A  
 Wire range 28-12 AWG

### Mechanical

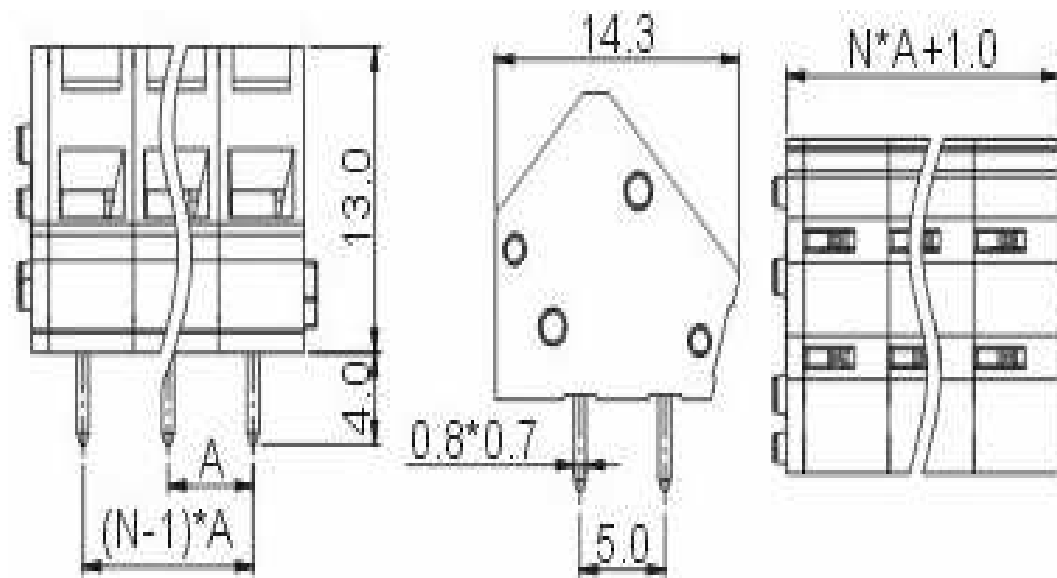
Operating temperature -40°C ~ +105°C

### Dimensions

Pitch 10.16mm  
 Poles 2P - 24P

### Material

Housing Nylon PA66 (UL94V-0)  
 Pin header Brass, Tin plated  
 Wire guard Stainless steel



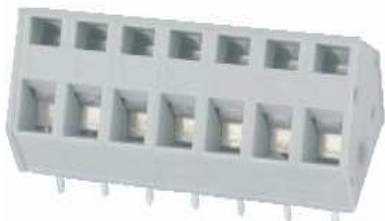
### Screwless Terminal Block

Part No.: **A11U003**

Customer:

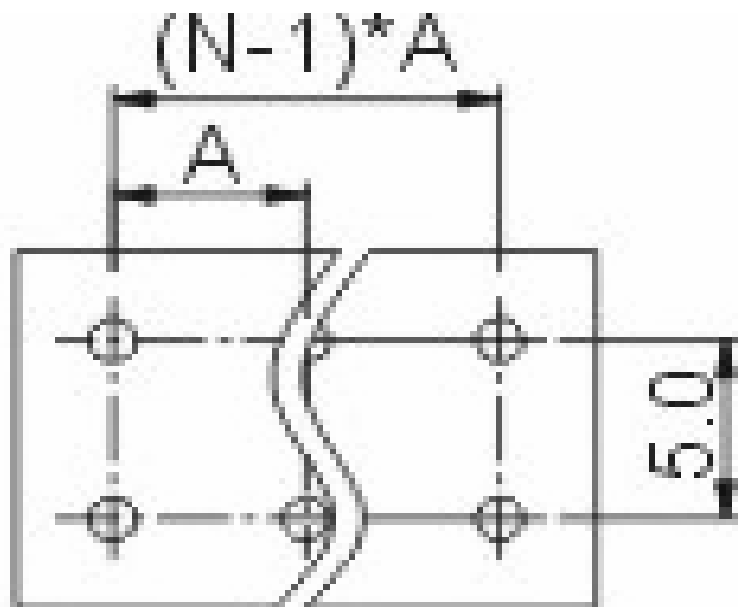
DRW:	Jason	CHKD	Wilson	MATL:	Wilson	TOLERANCE	Mason	DATE	10.02.2014
APPD:	Schumi			FINISH	Jamy		Sheet No.	1 from 4	

# EDCON-COMPONENTS



PCB Layout (Dimension in mm)

Dimensions (mm)



No. of Pos.	A	Tol. P	B	Tol. P
02	21,32	± 0,35	10,16	± 0,35
03	31,48	± 0,35	20,32	± 0,35
04	41,64	± 0,35	30,48	± 0,35
05	51,80	± 0,35	40,64	± 0,35
06	61,96	± 0,35	50,80	± 0,35
07	72,12	± 0,35	60,96	± 0,35
08	82,28	± 0,35	71,12	± 0,35
09	92,44	± 0,35	81,28	± 0,35
10	102,60	± 0,35	91,44	± 0,35
11	112,76	± 0,35	101,60	± 0,35
12	122,92	± 0,35	111,76	± 0,35
13	133,08	± 0,35	121,92	± 0,35
14	143,24	± 0,35	132,08	± 0,35
15	153,40	± 0,35	142,24	± 0,35
16	163,56	± 0,35	152,40	± 0,35
17	173,72	± 0,35	162,56	± 0,35
18	183,88	± 0,35	172,72	± 0,35
19	194,04	± 0,35	182,88	± 0,35
20	204,20	± 0,35	193,04	± 0,35
21	214,36	± 0,35	203,20	± 0,35
22	224,52	± 0,35	213,36	± 0,35
23	234,68	± 0,35	223,52	± 0,35
24	244,84	± 0,35	233,68	± 0,35

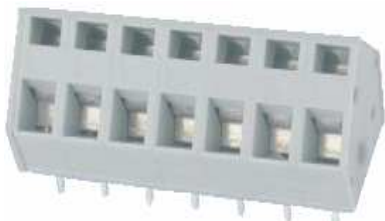
**Screwless Terminal Block**

Part No.: **A11U003**

DRW:	Jason	CHKD	Wilson	MATL:	Wilson	TOLERANCE	Mason	DATE	10.02.2014
APPD:	Schumi			FINISH	Jamy		Sheet No.	2 from 4	

Customer:

# EDCON-COMPONENTS



## Ordering Informations

Serie	No. of Pos.	Body Color	Approval	Approval Code	ROHS	Packing	EDCON Cust. No.	Customer Version		
<b>A11U003</b>	<b>02</b>	<b>GY</b>	<b>N</b>	<b>N</b>	<b>R</b>	<b>B</b>				

Pitch  
10,16

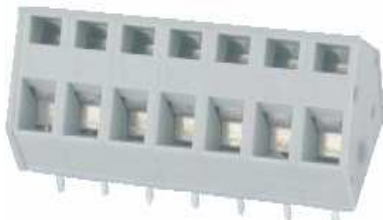
<b>02=</b> Number of Pos. Standard 2~24 Pos.	<b>GY=</b> Gray (Standard)  <b>GN=</b> Green  <b>OR=</b> Orange  <b>BK=</b> Black	<b>N=</b> No Approval  <b>1=</b> Approval for Material  <b>2=</b> Approval for Terminal Block	<b>N=</b> NON Approval  <b>A=</b> UL /UR Approval Please consult EDCON for available  <b>B=</b> VDE Approval Please consult EDCON for available  <b>C=</b> TÜV Approval Please consult EDCON for available	<b>R=</b> ROHS Conform  <b>N=</b> NON ROHS Conform	<b>B=</b> Standard Package  <b>I=</b> Individual Package	<b>xxxxxx=</b> Customer Number	<b>xxx=</b> Customer Version ??(Printing)
---	---	---	--	--	--	--------------------------------	---

**Screwless Terminal Block**

Part No.: **A11U003**

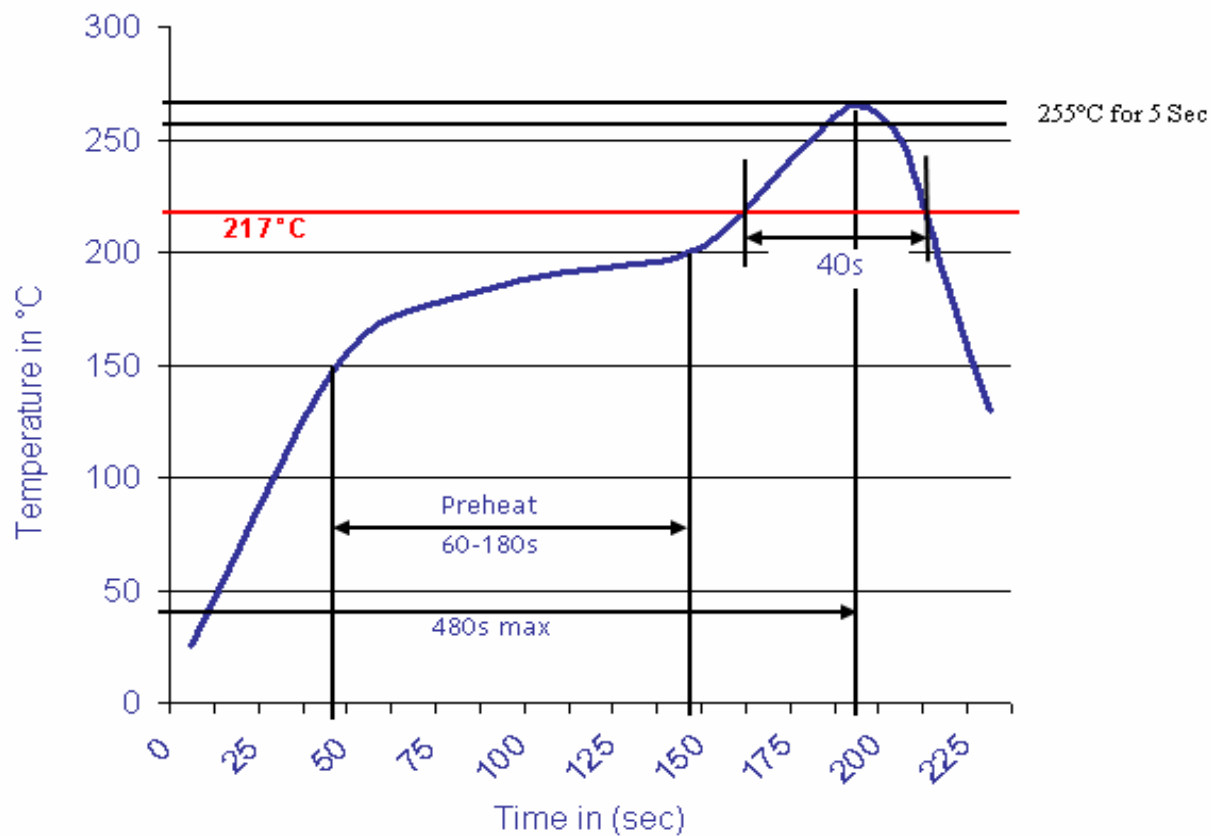
DRW:	Jason	CHKD	Wilson	MATL:	Wilson	TOLERANCE	Mason	DATE	10.02.2014
APPD:	Schumi			FINISH	Jamy		Sheet No.		3 from 4

Customer:



Soldering Profile Curve

Classification Reflow Profile (JEDEC J-STD-020C)



**Screwless Terminal Block**

Part No.: **A11U003**

Customer:

DRW:	Jason	CHKD	Wilson	MATL:	Wilson	TOLERANCE	Mason	DATE	10.02.2014
APPD:	Schumi			FINISH	Jamy		Sheet No.	4 from 4	



