

Data Sheet

Screwless Terminal Block

Pitch: 10,00 mm

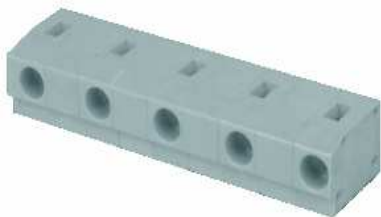
Serie: A11T020

Customer Information for special Item

EDCON Customer : 0

Customer Version No. : 0

EDCON-COMPONENTS



Technical Discription

Drawing (Dimension in mm)

Electrical

Standard	cULus	VDE
Rated voltage	300V	450V
Rated current	10A	6A
Withstanding voltage	1.6KV	2.5KV
Wire range	0.5mm ²	
Stranded / solid wire	20-14 AWG	

Mechanical

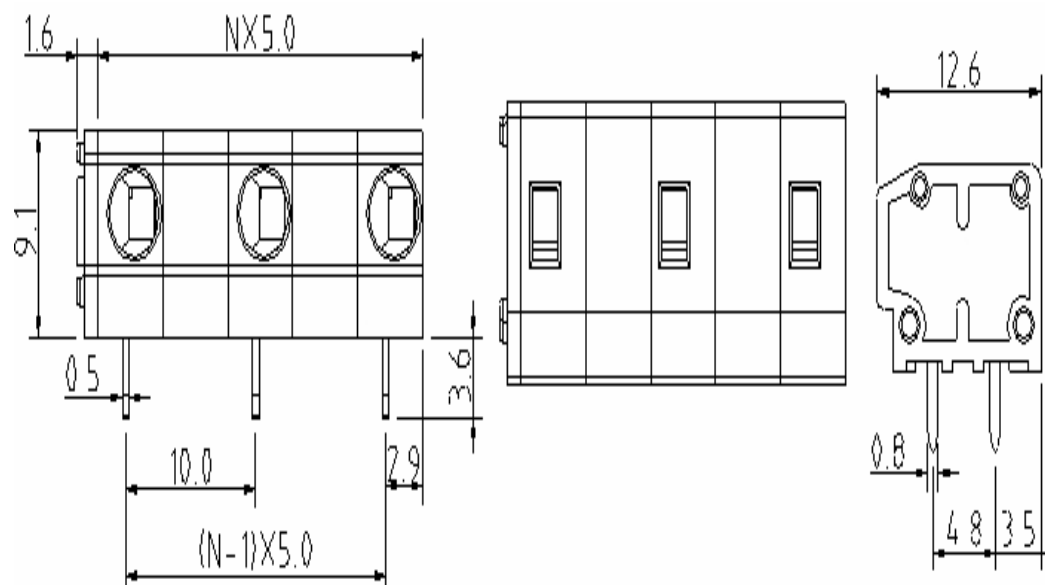
Wire strip length	6 ~ 7mm
Ambient temperature	-30°C ~ +105°C
Soldering temperature	250°C ±10°C/5 sec

Dimensions

Pitch	10.00mm
Poles	2P - 12P

Material

Housing	Thermoplastic (UL94V-0)
Pin header	Brass, Tin plated
Wire guard	Stainless steel



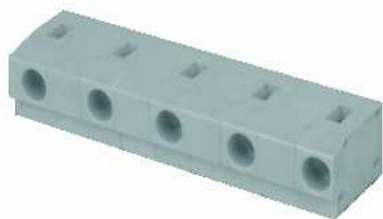
Screwless Terminal Block

Part No.: **A11T020**

Customer:

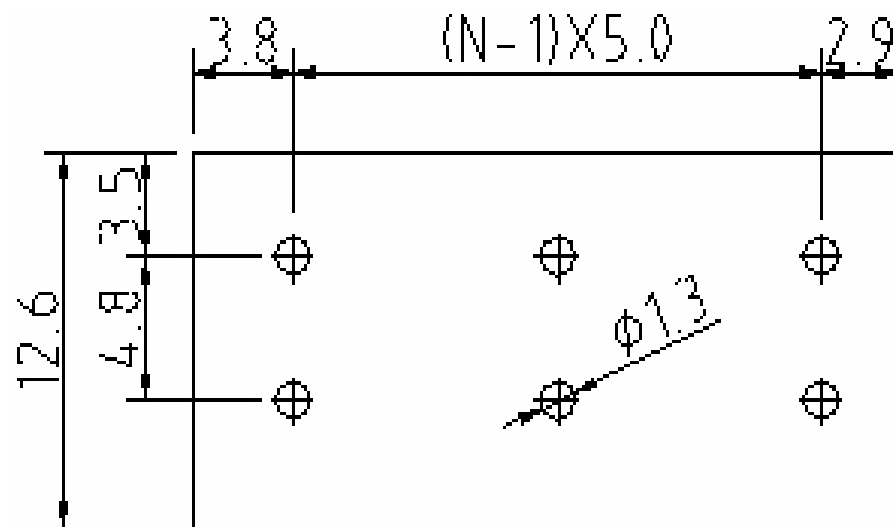
DRW:	Jason	CHKD	Wilson	MATL:	Wilson	TOLERANCE	Mason	DATE	10.02.2014
APPD:	Schumi			FINISH	Jamy		Sheet No.	1 from 4	

EDCON-COMPONENTS



PCB Layout (Dimension in mm)

Dimensions (mm)



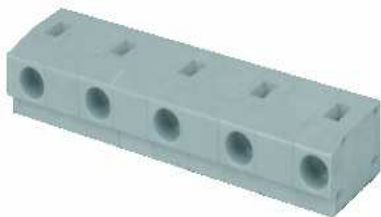
No. of Pos.	A	Tol. P	B	Tol. P
02	21,60	± 0,35	10,00	± 0,35
03	31,60	± 0,35	20,00	± 0,35
04	41,60	± 0,35	30,00	± 0,35
05	51,60	± 0,35	40,00	± 0,35
06	61,60	± 0,35	50,00	± 0,35
07	71,60	± 0,35	60,00	± 0,35
08	81,60	± 0,35	70,00	± 0,35
09	91,60	± 0,35	80,00	± 0,35
10	101,60	± 0,35	90,00	± 0,35
11	111,60	± 0,35	100,00	± 0,35
12	121,60	± 0,35	110,00	± 0,35

Screwless Terminal Block

Part No.: **A11T020**

DRW:	Jason	CHKD	Wilson	MATL:	Wilson	TOLERANCE	Mason	DATE	10.02.2014
APPD:	Schumi			FINISH	Jamy		Sheet No.	2 from 4	Customer:

EDCON-COMPONENTS



Ordering Informations

Serie	No. of Pos.	Body Color	Approval	Approval Code	ROHS	Packing	EDCON Cust. No.	Customer Version		
-------	-------------	------------	----------	---------------	------	---------	-----------------	------------------	--	--

A11T020	02	GY	N	N	R	B				
----------------	-----------	-----------	----------	----------	----------	----------	--	--	--	--

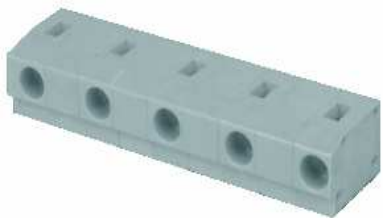
Pitch 10,00	02 = Number of Pos. Standard 2~12 Pos.	GY = Gray (Standard) GN = Green OR = Orange BK = Black	N = No Approval 1 = Approval for Material 2 = Approval for Terminal Block	N = NON Approval A = UL /UR Approval Please consult EDCON for available B = VDE Approval Please consult EDCON for available C = TÜV Approval Please consult EDCON for available	R = ROHS Conform N = NON ROHS Conform	B = Standard Package I = Individual Package	xxxxxx = Customer Number	xxx = Customer Version ??(Printing)		
----------------	--	---	--	--	--	--	---------------------------------	--	--	--

Screwless Terminal Block

Part No.: **A11T020**

DRW:	Jason	CHKD	Wilson	MATL:	Wilson	TOLERANCE	Mason	DATE	10.02.2014
APPD:	Schumi			FINISH	Jamy		Sheet No.		3 from 4

Customer:



Soldering Profile Curve

Classification Reflow Profile (JEDEC J-STD-020C)



Screwless Terminal Block

Part No.: **A11T020**

Customer:

DRW:	Jason	CHKD	Wilson	MATL:	Wilson	TOLERANCE	Mason	DATE	10.02.2014
APPD:	Schumi			FINISH	Jamy		Sheet No.	4 from 4	

