

Data Sheet

Screwless Terminal Block

Pitch: 10,00 mm

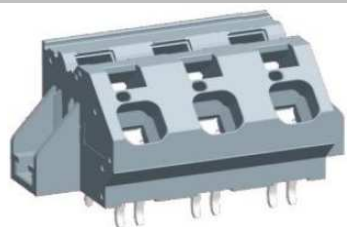
Serie: A11T014

Customer Information for special Item

EDCON Customer : 0

Customer Version No. : 0

EDCON-COMPONENTS



Technical Discription

Drawing (Dimension in mm)

Electrical

| | | |
|----------------------|-----------|-----------------------|
| Standard | cULus | IEC |
| Rated voltage | 300V | 630V |
| Rated current | 57A | 76A |
| Withstanding voltage | 1.6KV | 8KV |
| Solid wire | 26-12 AWG | 0.2-16mm ² |
| Stranded wire | 26-12 AWG | 0.2-16mm ² |

Mechanical

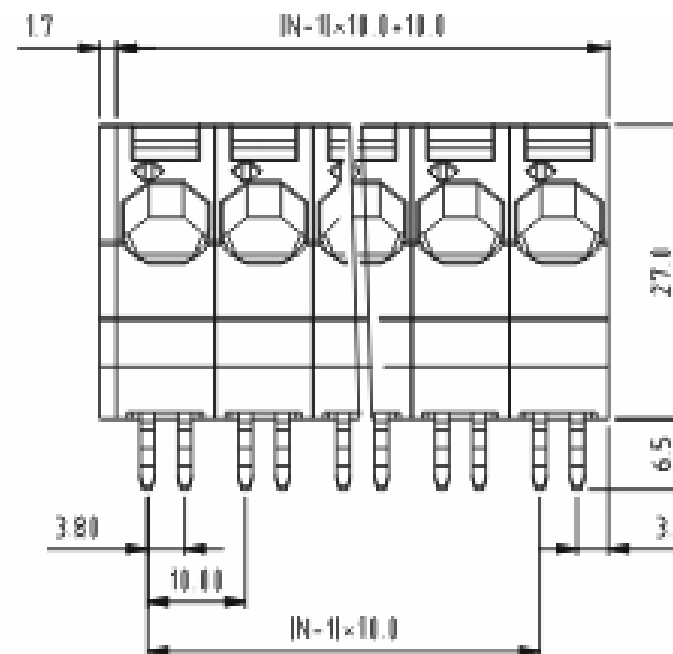
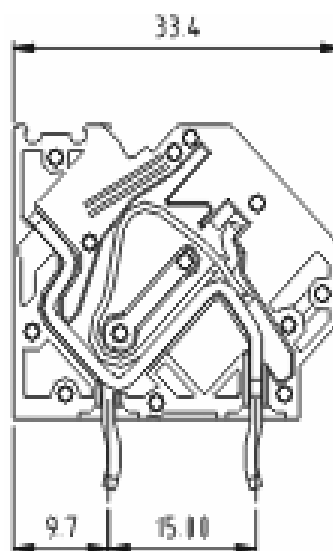
| | |
|-----------------------|-------------------|
| Wire strip length | 6 ~ 7mm |
| Amnient temperature | -40°C ~ +115°C |
| Soldering temperature | 250°C ±10°C/5 sec |

Dimensions

| | |
|-------|----------|
| Pitch | 10.00mm |
| Poles | 2P - 12P |

Material

| | |
|------------|-------------------------|
| Housing | Thermoplastic (UL94V-0) |
| Pin header | PhBz |
| Wire guard | Stainless steel |



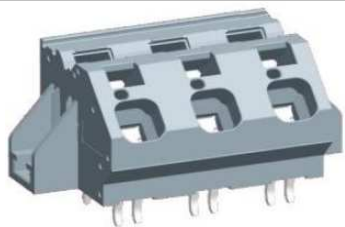
Screwless Terminal Block

Part No.: **A11T014**

Customer:

| | | | | | | | | | |
|-------|--------|------|--------|--------|--------|-----------|-----------|----------|------------|
| DRW: | Jason | CHKD | Wilson | MATL: | Wilson | TOLERANCE | Mason | DATE | 10.02.2014 |
| APPD: | Schumi | | | FINISH | Jamy | | Sheet No. | 1 from 4 | |

EDCON-COMPONENTS



Ordering Informations

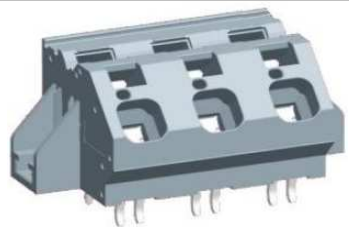
| Serie | No. of Pos. | Body Color | Approval | Approval Code | ROHS | Packing | EDCON Cust. No. | Customer Version | | |
|----------------|-------------|------------|----------|---------------|----------|----------|-----------------|------------------|--|--|
| A11T014 | 02 | GY | N | N | R | B | | | | |

Pitch
10,00

| | | | | | | | |
|---|----------------------------|---------------------------------------|--|----------------------------|------------------------------|--------------------------------|---|
| 02= Number of Pos. Standard 2~12 Pos. | GY= Gray (Standard) | N= No Approval | N= NON Approval | R= ROHS Conform | B= Standard Package | xxxxxx= Customer Number | xxx= Customer Version ??(Printing) |
| | GN= Green | 1= Approval for Material | A= UL /UR Approval Please consult EDCON for available | N= NON ROHS Conform | I= Individual Package | | |
| | | 2= Approval for Terminal Block | | | | | |
| | OR= Orange | | B= VDE Approval Please consult EDCON for available | | | | |
| | BK= Black | | C= TÜV Approval Please consult EDCON for available | | | | |

| | |
|---------------------------------|----------------|
| Screwless Terminal Block | |
| Part No.: | A11T014 |
| Customer: | |

| | | | | | | | | | |
|-------|--------|------|--------|--------|--------|-----------|-----------|------|------------|
| DRW: | Jason | CHKD | Wilson | MATL: | Wilson | TOLERANCE | Mason | DATE | 10.02.2014 |
| APPD: | Schumi | | | FINISH | Jamy | | Sheet No. | | 3 from 4 |



Soldering Profile Curve

Classification Reflow Profile (JEDEC J-STD-020C)



Screwless Terminal Block

Part No.: **A11T014**

Customer:

| | | | | | | | | | |
|-------|--------|------|--------|--------|--------|-----------|-----------|----------|------------|
| DRW: | Jason | CHKD | Wilson | MATL: | Wilson | TOLERANCE | Mason | DATE | 10.02.2014 |
| APPD: | Schumi | | | FINISH | Jamy | | Sheet No. | 4 from 4 | |

