

# Data Sheet

## Screwless Terminal Block

**Pitch: 7,62 mm**

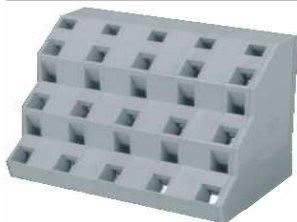
**Serie: A11R024**

### Customer Information for special Item

**EDCON Customer : 0**

**Customer Version No. : 0**

# EDCON-COMPONENTS



## Technical Discription

## Drawing (Dimension in mm)

### Electrical

Standard	cULus
Rated voltage	300V
Rated current	10A
Withstanding voltage	1.6KV
Solid / Stranded wire	28-12 AWG

### Mechanical

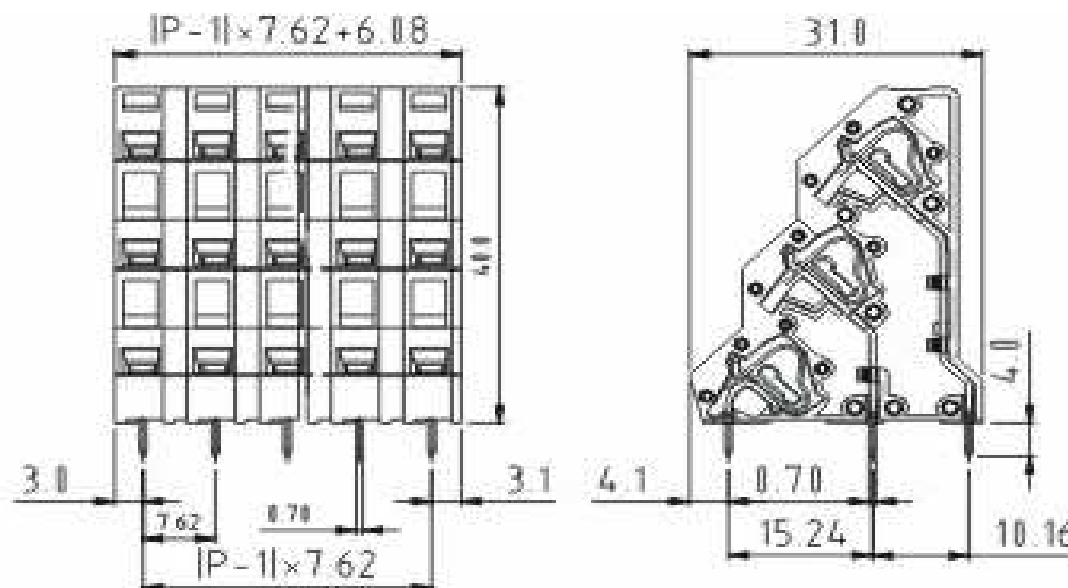
Wire strip length	6 ~ 7mm
Ambient temperature	-40°C ~ +115°C
Soldering temperature	250°C ±10°C/5 sec

### Dimensions

Pitch	7.62mm
Poles	<b>3x</b> (2P - 12P)

### Material

Housing	Thermoplastic (UL94V-0)
Pin header	Brass, Tin plated
Wire guard	Stainless steel



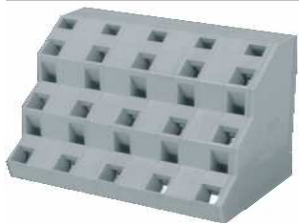
### Screwless Terminal Block

Part No.: **A11R024**

DRW:	Jason	CHKD	Wilson	MATL:	Wilson	TOLERANCE	Mason	DATE	07.02.2014
APPD:	Schumi			FINISH	Jamy		Sheet No.		1 from 4

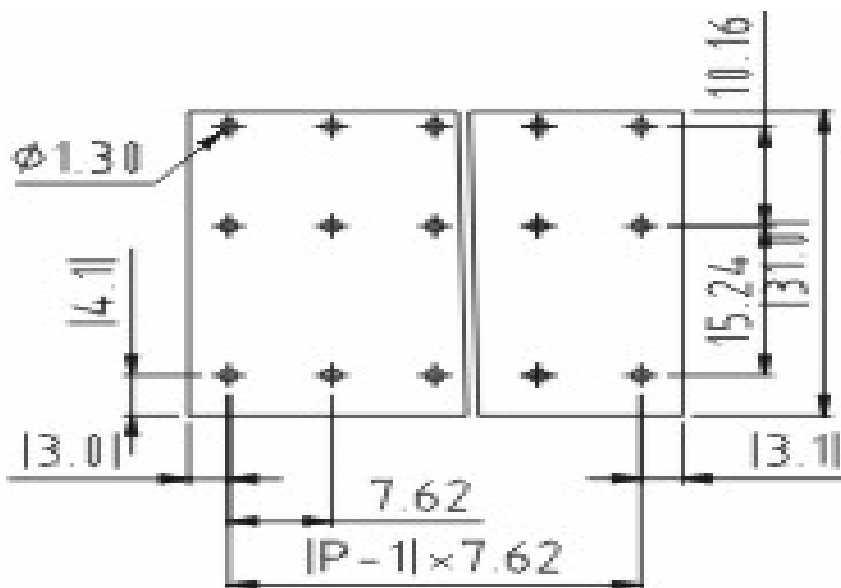
Customer:

# EDCON-COMPONENTS



PCB Layout (Dimension in mm)

Dimensions (mm)



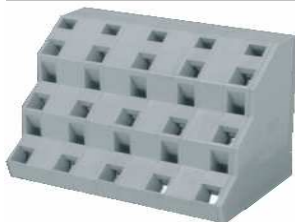
No. of Pos.	A	Tol. P	B	Tol. P
02	21,32	$\pm 0,35$	7,62	$\pm 0,35$
03	28,94	$\pm 0,35$	15,24	$\pm 0,35$
04	36,56	$\pm 0,35$	22,86	$\pm 0,35$
05	44,18	$\pm 0,35$	30,48	$\pm 0,35$
06	51,80	$\pm 0,35$	38,10	$\pm 0,35$
07	59,42	$\pm 0,35$	45,72	$\pm 0,35$
08	67,04	$\pm 0,35$	53,34	$\pm 0,35$
09	74,66	$\pm 0,35$	60,96	$\pm 0,35$
10	82,28	$\pm 0,35$	68,58	$\pm 0,35$
11	89,90	$\pm 0,35$	76,20	$\pm 0,35$
12	97,52	$\pm 0,35$	83,82	$\pm 0,35$

**Screwless Terminal Block**

Part No.: **A11R024**

DRW:	Jason	CHKD	Wilson	MATL:	Wilson	TOLERANCE	Mason	DATE	07.02.2014
APPD:	Schumi			FINISH	Jamy		Sheet No.	2 from 4	Customer:

# EDCON-COMPONENTS



## Ordering Informations

Serie	No. of Pos.	Body Color	Approval	Approval Code	ROHS	Packing	EDCON Cust. No.	Customer Version		
-------	-------------	------------	----------	---------------	------	---------	-----------------	------------------	--	--

<b>A11R024</b>	<b>02</b>	<b>GY</b>	<b>N</b>	<b>N</b>	<b>R</b>	<b>B</b>				
----------------	-----------	-----------	----------	----------	----------	----------	--	--	--	--

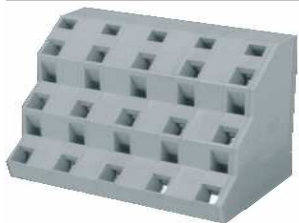
Pitch	02= Number of Pos.	GY= Gray (Standard)	N= No Approval	N= NON Approval	R= ROHS Conform	B= Standard Package	xxxxxx= Customer Number	xxx= Customer Version ??(Printing)
-------	--------------------	---------------------	----------------	-----------------	-----------------	---------------------	-------------------------	------------------------------------

7,62	Standard 2~12 Pos.	GN= Green	1= Approval for Material	A= UL /UR Approval Please consult EDCON for available	N= NON ROHS Conform	I= Individual Package		
		OR= Orange	2= Approval for Terminal Block	B= VDE Approval Please consult EDCON for available				
		BK= Black		C= TÜV Approval Please consult EDCON for available				

**Screwless Terminal Block**

Part No.: **A11R024**

DRW:	Jason	CHKD	Wilson	MATL:	Wilson	TOLERANCE	Mason	DATE	07.02.2014	Customer:
APPD:	Schumi			FINISH	Jamy		Sheet No.	3 from 4		



Soldering Profile Curve

Classification Reflow Profile (JEDEC J-STD-020C)



**Screwless Terminal Block**

Part No.: **A11R024**

Customer:

DRW:	Jason	CHKD	Wilson	MATL:	Wilson	TOLERANCE	Mason	DATE	07.02.2014
APPD:	Schumi			FINISH	Jamy		Sheet No.	4 from 4	



