

Data Sheet

Screwless Terminal Block

Pitch: 5,08 mm

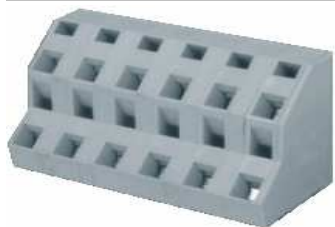
Serie: A11M026

Customer Information for special Item

EDCON Customer : 0

Customer Version No. : 0

EDCON-COMPONENTS



Technical Description

Drawing (Dimension in mm)

Electrical

Standard	cULus
Rated voltage	300V
Rated current	10A
Withstanding voltage	1.6KV
Solid / Stranded wire	28-12 AWG

Mechanical

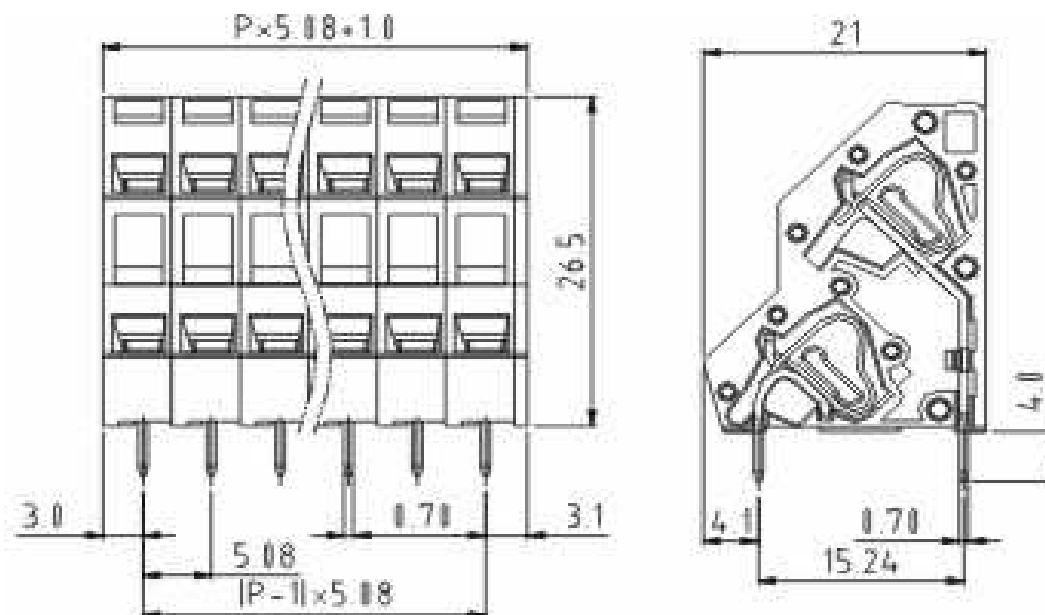
Wire strip length	5 ~ 6mm
Ambient temperature	-40°C ~ +115°C
Soldering temperature	250°C ±10°C/5 sec

Dimensions

Pitch	5.08mm
Poles	2x (2P - 24P)

Material

Housing	Thermoplastic UL94V-0)
Pin header	Brass, Tin plated
Wire guard	Stainless steel



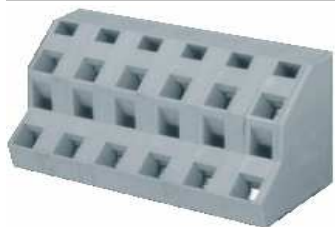
Screwless Terminal Block

Part No.: **A11M026**

Customer:

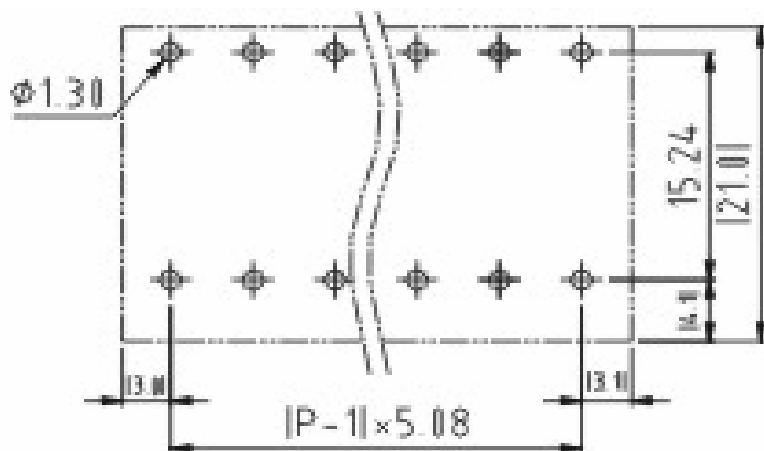
DRW:	Jason	CHKD	Wilson	MATL:	Wilson	TOLERANCE	Mason	DATE	03.02.2014
APPD:	Schumi			FINISH	Jamy		Sheet No.	1 from 4	

EDCON-COMPONENTS



PCB Layout (Dimension in mm)

Dimensions (mm)



No. of Pos.	A	Tol. P	B	Tol. P
02	11,16	± 0,35	5,08	± 0,35
03	16,24	± 0,35	10,16	± 0,35
04	21,32	± 0,35	15,24	± 0,35
05	26,40	± 0,35	20,32	± 0,35
06	31,48	± 0,35	25,40	± 0,35
07	36,56	± 0,35	30,48	± 0,35
08	41,64	± 0,35	35,56	± 0,35
09	46,72	± 0,35	40,64	± 0,35
10	51,80	± 0,35	45,72	± 0,35
11	56,88	± 0,35	50,80	± 0,35
12	61,96	± 0,35	55,88	± 0,35
13	67,04	± 0,35	60,96	± 0,35
14	72,12	± 0,35	66,04	± 0,35
15	77,20	± 0,35	71,12	± 0,35
16	82,28	± 0,35	76,20	± 0,35
17	87,36	± 0,35	81,28	± 0,35
18	92,44	± 0,35	86,36	± 0,35
19	97,52	± 0,35	91,44	± 0,35
20	102,60	± 0,35	96,52	± 0,35
21	107,68	± 0,35	101,60	± 0,35
22	112,76	± 0,35	106,68	± 0,35
23	117,84	± 0,35	111,76	± 0,35
24	122,92	± 0,35	116,84	± 0,35

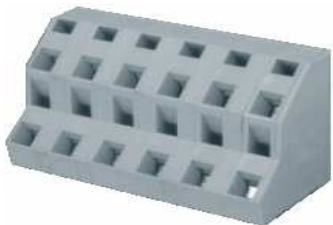
Screwless Terminal Block

Part No.: **A11M026**

Customer:

DRW:	Jason	CHKD	Wilson	MATL:	Wilson	TOLERANCE	Mason	DATE	03.02.2014
APPD:	Schumi			FINISH	Jamy		Sheet No.		2 from 4

EDCON-COMPONENTS



Ordering Informations

Serie	No. of Pos.	Body Color	Approval	Approval Code	ROHS	Packing	EDCON Cust. No.	Customer Version		
-------	-------------	------------	----------	---------------	------	---------	-----------------	------------------	--	--

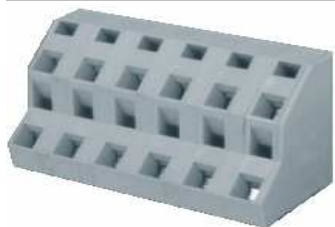
A11M026	02	OR	N	N	R	B				
----------------	-----------	-----------	----------	----------	----------	----------	--	--	--	--

Pitch	02= Number of Pos.	GY= Gray (Standard)	N= No Approval	N= NON Approval	R= ROHS Conform	B= Standard Package	xxxxxx= Customer Number	xxx= Customer Version ??(Printing)
-------	--------------------	---------------------	----------------	-----------------	-----------------	---------------------	-------------------------	------------------------------------

5,08	Standard 2~24 Pos.	GN= Green	1= Approval for Material	A= UL /UR Approval Please consult EDCON for available	N= NON ROHS Conform	I= Individual Package		
		OR= Orange	2= Approval for Terminal Block	B= VDE Approval Please consult EDCON for available				
		BK= Black		C= TÜV Approval Please consult EDCON for available				

Screwless Terminal Block	
Part No.:	A11M026
Customer:	

DRW:	Jason	CHKD	Wilson	MATL:	Wilson	TOLERANCE	Mason	DATE	03.02.2014
APPD:	Schumi			FINISH	Jamy		Sheet No.		3 from 4



Soldering Profile Curve

Classification Reflow Profile (JEDEC J-STD-020C)



Screwless Terminal Block

Part No.: **A11M026**

Customer:

DRW:	Jason	CHKD	Wilson	MATL:	Wilson	TOLERANCE	Mason	DATE	03.02.2014
APPD:	Schumi			FINISH	Jamy		Sheet No.	4 from 4	

