

Data Sheet

Screwless Terminal Block

Pitch: 5,08 mm

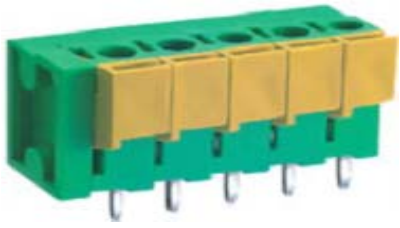
Serie: A11M023

Customer Information for special Item

EDCON Customer : 0

Customer Version No. : 0

EDCON-COMPONENTS



Technical Discription

Electrical

Standard	cUL	VDE
Rated voltage	AC 300V	AC 450V
Rated current	10A	16A
Wire range	22-14 AWG	0.2-2.5mm ²

Mechanical

Operating temperature	-40°C ~ +105°C
-----------------------	----------------

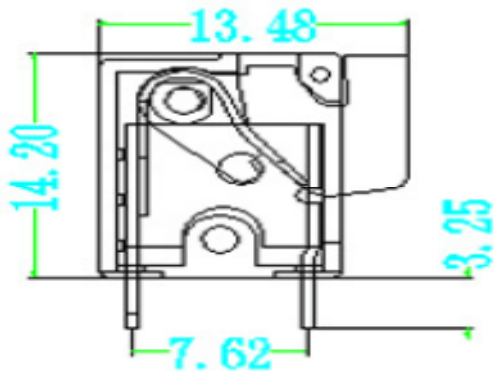
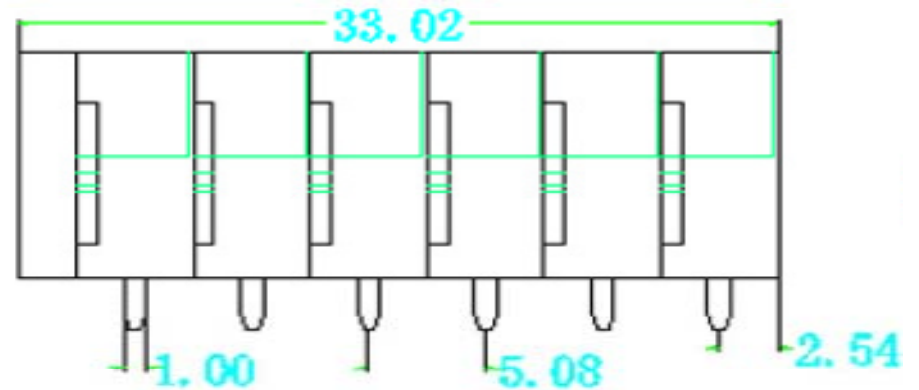
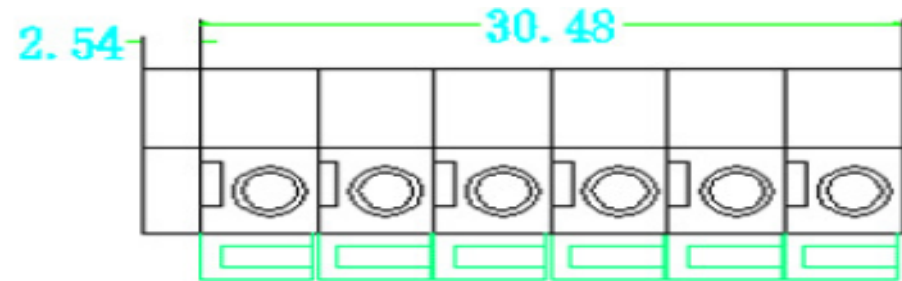
Dimensions

Pitch	5.08mm
Poles	2P - 24P

Material

Housing	Polyamidee66 (UL94V-0)
Pin header	Brass, Tin plated
Wire guard	Stainless Steel

Drawing (Dimension in mm)



Screwless Terminal Block

Part No.: **A11M023**

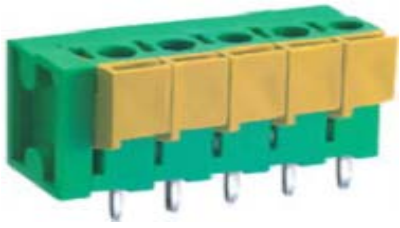
Customer:

DRW:	Jason	CHKD	Wilson	MATL:	Wilson	TOLERANCE	Mason	DATE	20.04.2021
APPD:	Schumi			FINISH	Jamy		Sheet No.		1 from 4

www.edcon-components.com

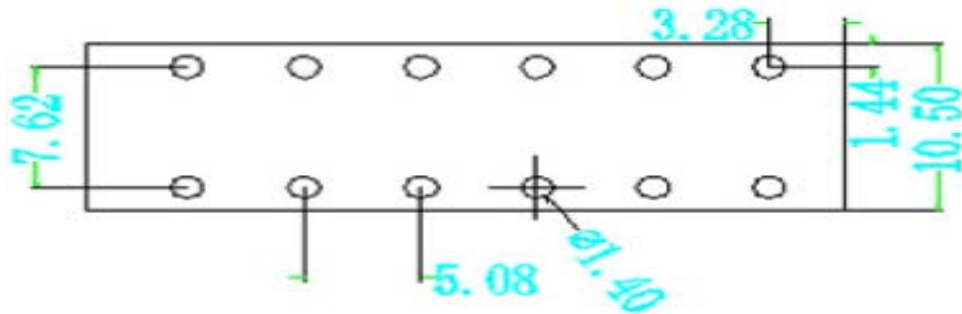
email: info@edcon-components.com

EDCON-COMPONENTS



PCB Layout (Dimension in mm)

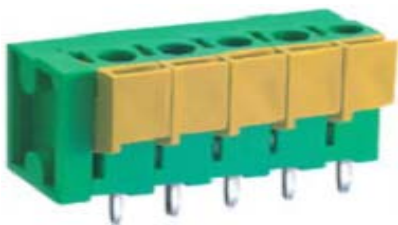
Dimensions (mm)



Screwless Terminal Block	
Part No.:	A11M023
Customer:	

DRW:	Jason	CHKD	Wilson	MATL:	Wilson	TOLERANCE	Mason	DATE	20.04.2021
APPD:	Schumi			FINISH	Jamy		Sheet No.	2	from 4

EDCON-COMPONENTS



Ordering Informations

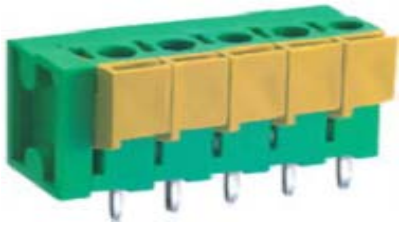
Serie	No. of Pos.	Body Color	Approval	Approval Code	ROHS	Packing	EDCON Cust. No.	Customer Version		
-------	-------------	------------	----------	---------------	------	---------	-----------------	------------------	--	--

A11M023	02	GN	N	N	R	B				
----------------	-----------	-----------	----------	----------	----------	----------	--	--	--	--

Pitch 5,08	02 = Number of Pos. Standard 2~24 Pos.	GY = Gray (Standard) GN = Green OR = Orange BK = Black	N = No Approval 1= Approval for Material 2= Approval for Terminal Block	N = NON Approval A= UL /UR Approval Please consult EDCON for available B = VDE Approval Please consult EDCON for available C = TÜV Approval Please consult EDCON for available	R = ROHS Conform N = NON ROHS Conform	B = Standard Package I= Individual Package	xxxxxx = Customer Number	xxx = Customer Version ??(Printing)
---------------	--	---	--	--	--	--	---------------------------------	---

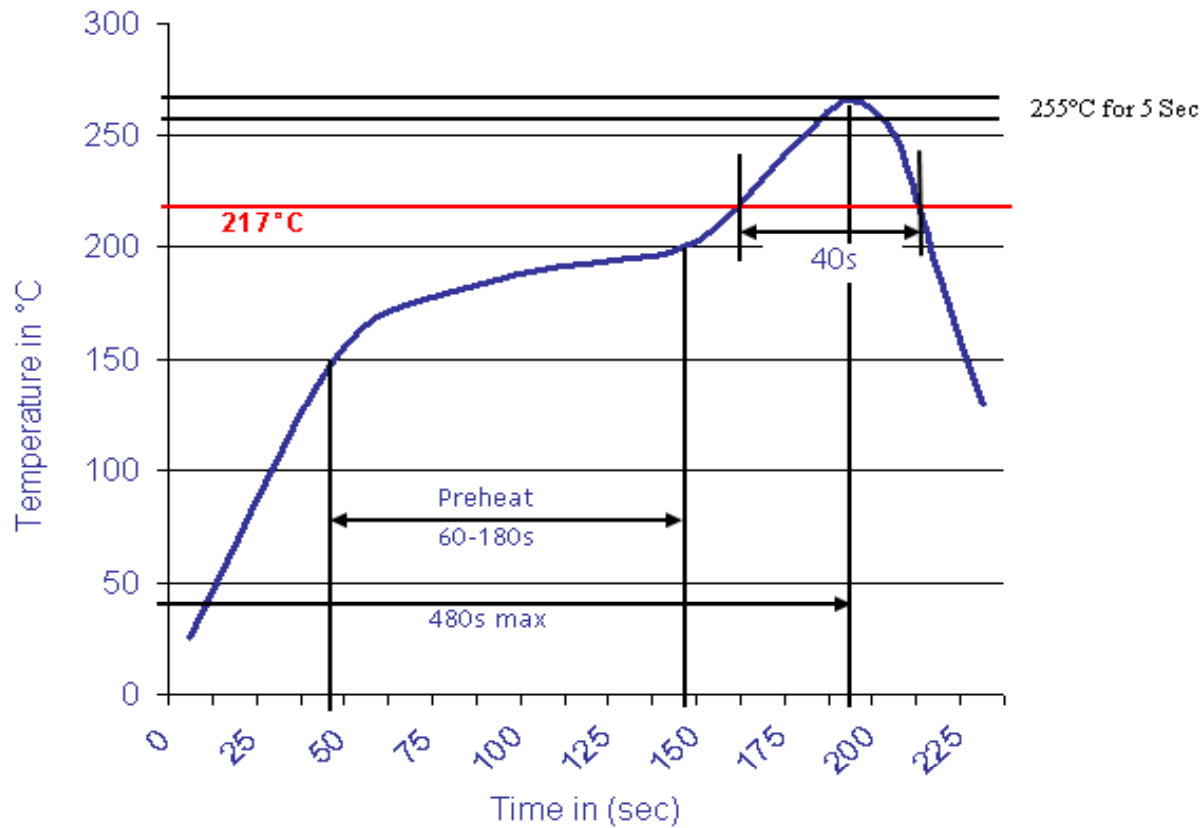
Screwless Terminal Block	
Part No.:	A11M023
Customer:	

DRW:	Jason	CHKD	Wilson	MATL:	Wilson	TOLERANCE	Mason	DATE	20.04.2021
APPD:	Schumi			FINISH	Jamy		Sheet No.		3 from 4



Soldering Profile Curve

Classification Reflow Profile (JEDEC J-STD-020C)



Screwless Terminal Block

Part No.: **A11M023**

Customer:

DRW:	Jason	CHKD	Wilson	MATL:	Wilson	TOLERANCE	Mason	DATE	20.04.2021
APPD:	Schumi			FINISH	Jamy		Sheet No.	4 from 4	